

Organizational Chart

AN TRAN
 DIRECTOR

ESTHER MARQUEZ
 EXECUTIVE SECRETARY I

DR. SARA MARCHESE
 MEDICAL DIRECTOR

VERONICA RODRIGUEZ
 CHIEF DEPUTY DIRECTOR

COMMUNITY AND GOVERNMENT RELATIONS
 VACANT
 DEPUTY DIRECTOR

QUALITY SUPPORT TEAM
LESLIE DALE
 SENIOR MANAGER

OFFICE OF IMMIGRANT & REFUGEE AFFAIRS (OIRA)
JOSE SERRANO
 HUMAN SERVICES MANAGER, SENIOR

ADMINISTRATIVE SERVICES

DORTHE LEE
 DIVISION DIRECTOR

SUSAN VALENZUELA
 SECRETARY III

ASSISTANCE PROGRAMS

MIKE EDMUNDSON
 DIVISION DIRECTOR

VACANT
 SECRETARY III

CHILDREN AND FAMILY SERVICES

LOAN ENGLISH
 DIVISION DIRECTOR

ASHLEY EDMUNDSON
 SECRETARY III

FAMILY SELF-SUFFICIENCY AND ADULT SERVICES

GAIL ARAUJO
 DIVISION DIRECTOR

VERONICA GRIMES
 SECRETARY III

PROFESSIONAL STANDARDS & OPERATIONS
TRICIA SMITH
 DEPUTY DIRECTOR

PROF DEV & BUSINESS RELATIONS
JAMES CHO
 DEPUTY DIRECTOR

BUDGET/DIV INITIATIVES/ TECHNOLOGY
KIM REED
 DEPUTY DIRECTOR

OPERATIONS & POLICY TEAM
MARSELA GASTELUM
 DEPUTY DIRECTOR

SUPPORT & OPERATIONS
RITA RANGEL
 DEPUTY DIRECTOR

CONTINUING FAMILY SRVCS
SCOTT BURDICK
 DEPUTY DIRECTOR

AS - REGIONAL OPERATIONS & POLICY
SUMIT SAPRA
 DEPUTY DIRECTOR

FSS/AS OPERATIONS & POLICY
TIBERINA UGARCOVICI
 DEPUTY DIRECTOR

FINANCIAL RESEARCH & DATA ANALYTICS
RYAN VAN OTTERLOO
 DEPUTY DIRECTOR

HUMAN RESOURCES
HILDA JUAREZ
 DEPUTY DIRECTOR

REGIONS - SPECIALIZED
ODON SANCHEZ
 DEPUTY DIRECTOR

REGIONS
RAQUEL VARGAS
 DEPUTY DIRECTOR

PLACEMENT
KRISTI FISKUM
 DEPUTY DIRECTOR

PREVENTION
ILAN WOLF
 DEPUTY DIRECTOR

DIVISIONAL & REGIONAL OPS
TAWNIA REVELES
 DEPUTY DIRECTOR





IN-HOME SUPPORTIVE SERVICES PUBLIC AUTHORITY
AARON HOGUE
 EXECUTIVE DIRECTOR

OC
 INFORMATION TECHNOLOGY

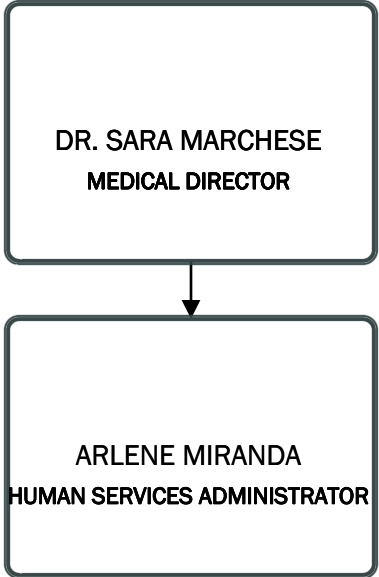
PROJECTS LEAD
DANA ARDELEANU
 HUMAN SERVICES MANAGER SENIOR

SYSTEMS MGMT & REPORTING
PRASHANT KAMBOYA
 DEPUTY DIRECTOR

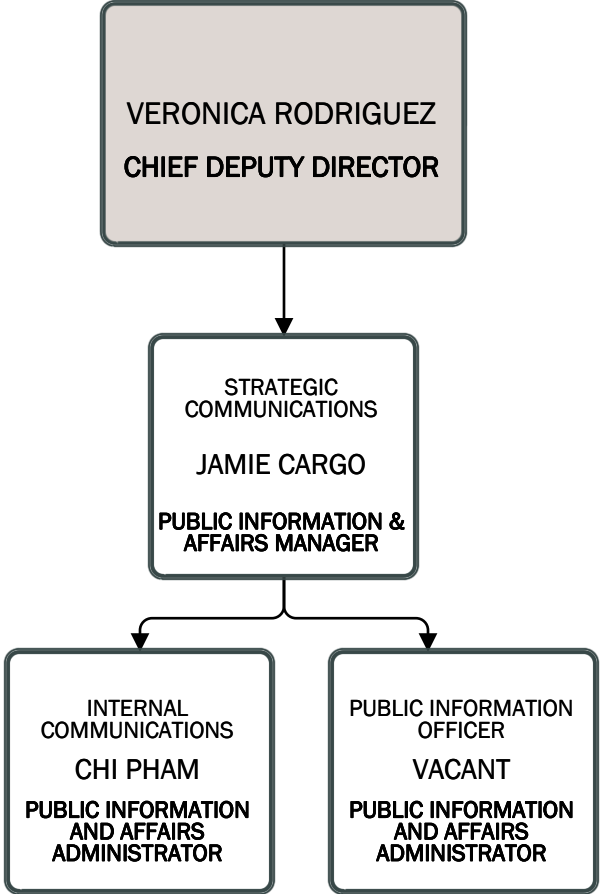
ACCOUNTING
TIFFANY THIBEAULT
 DEPUTY DIRECTOR

DIVISION:	# FTE	
ADMINISTRATIVE SERVICES	655	
ASSISTANCE PROGRAM	1830	
CHILDREN & FAMILY SERVICES	1132	
FAMILY SELF-SUFFICIENCY & ADULT SERVICES	917	
AGENCY TOTAL	4,534	

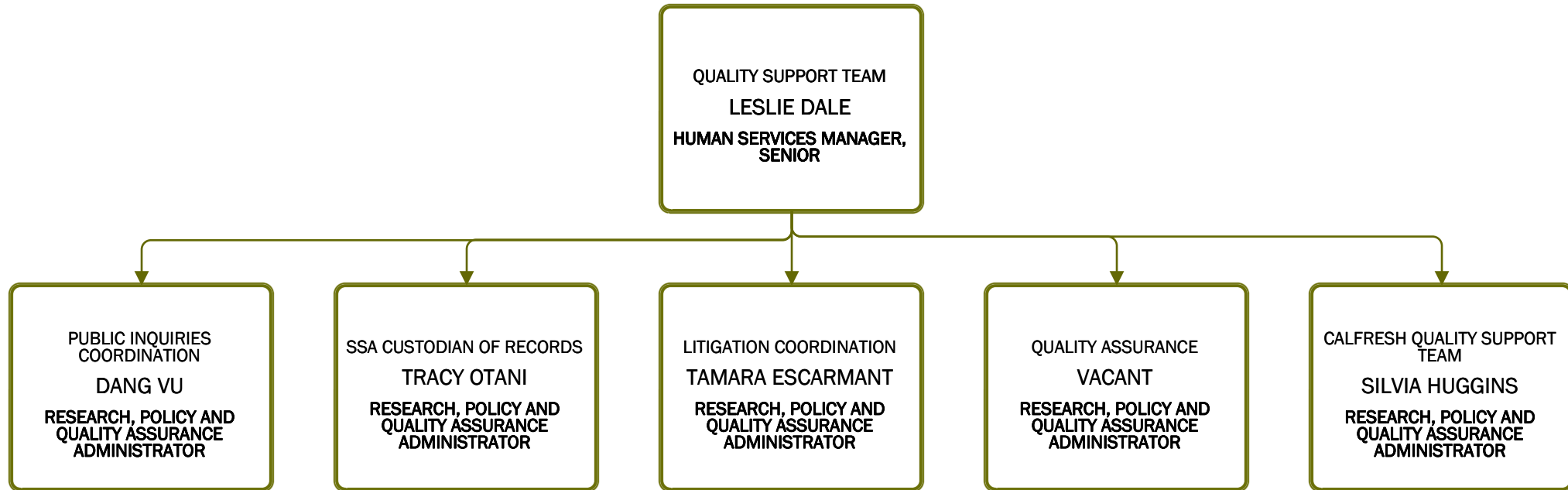
Medical Director's Office



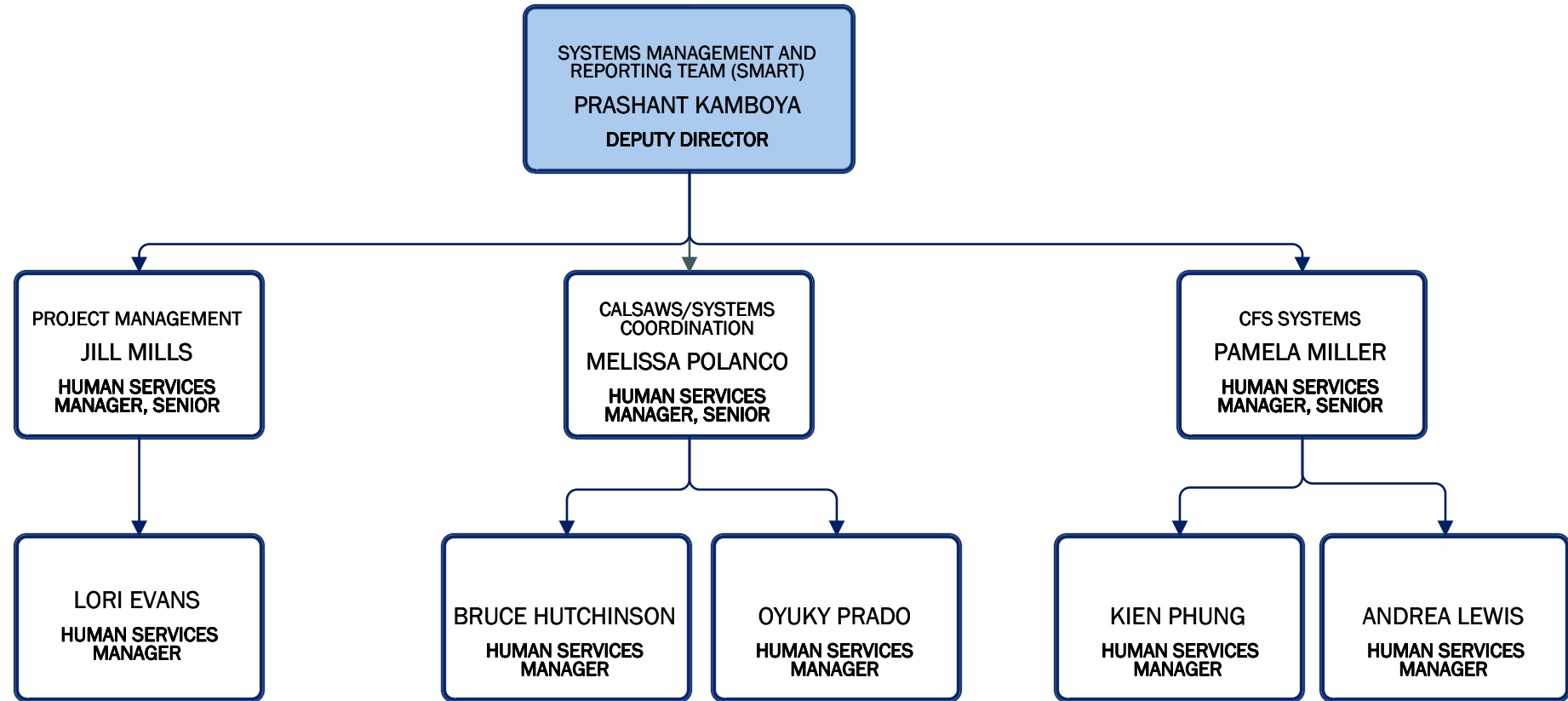
Administrative Services/Strategic Communications



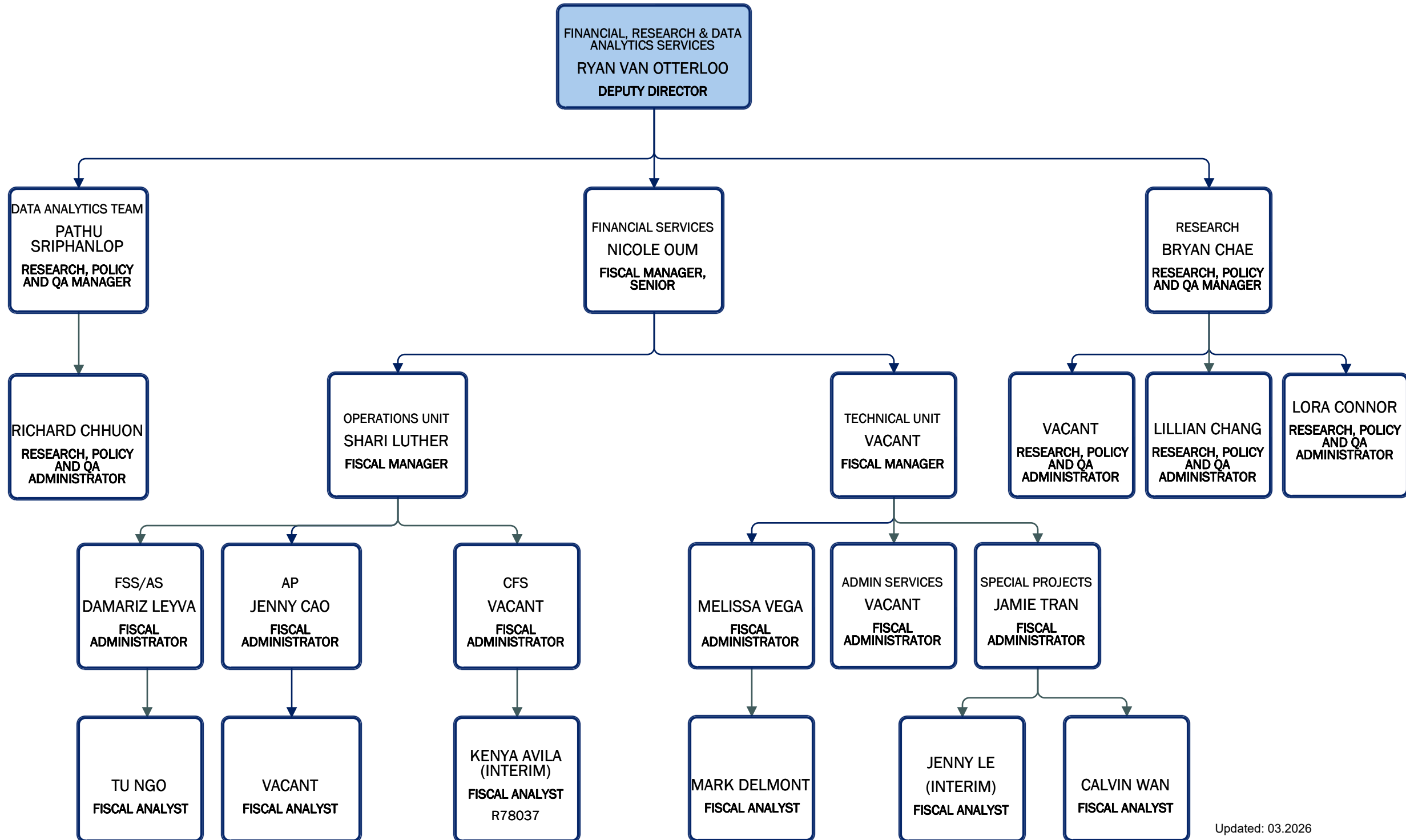
Administrative Services/Quality Support Team



Administrative Services/Systems Management and Reporting Team (SMART)

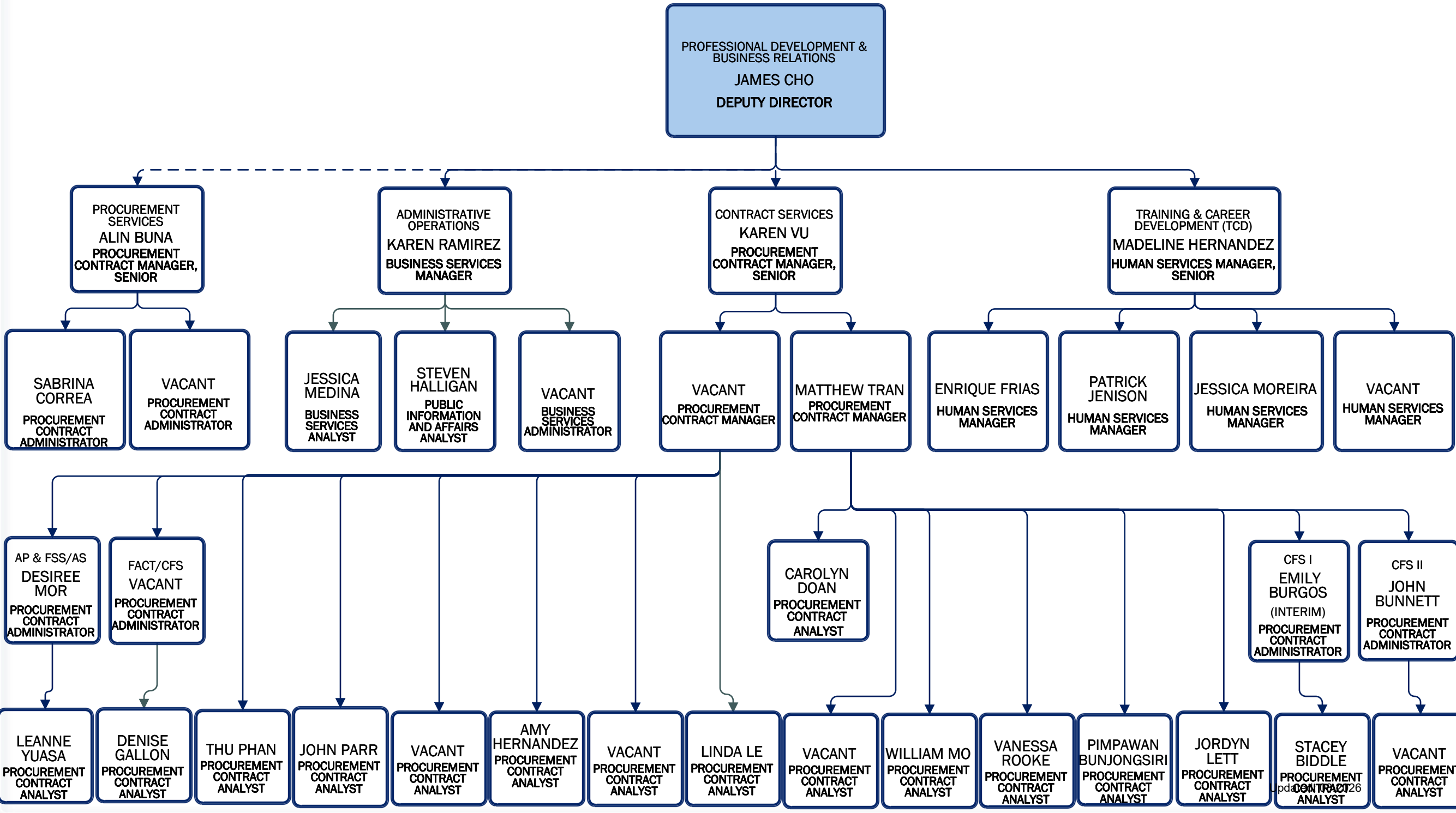


Administrative Services/Financial, Research & Data Analytics Services



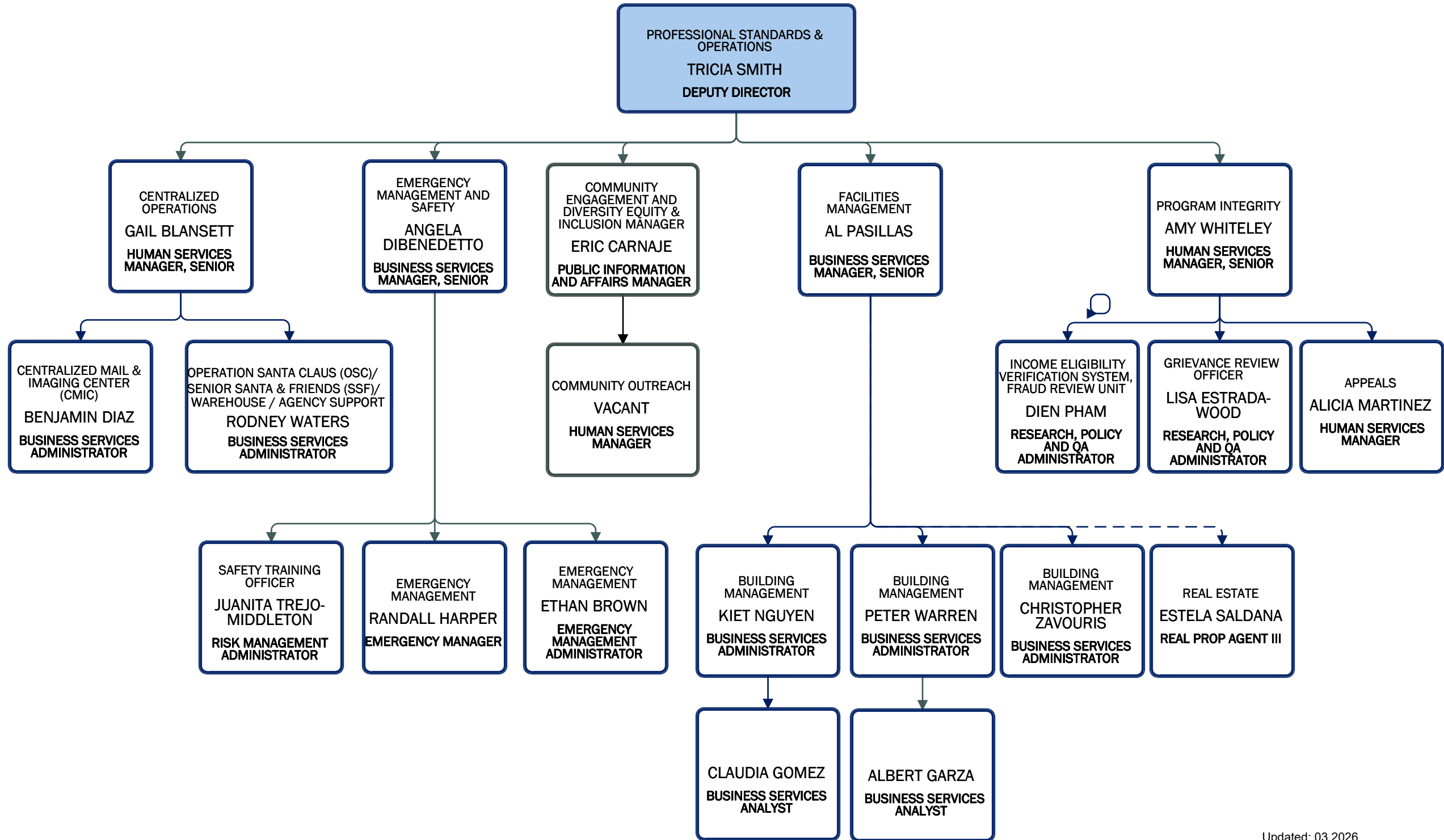
Administrative Services/Professional Development & Business Relations

03.2026



Administrative Services/Professional Standards & Operations

03.2026



Administrative Services/Human Resources

HUMAN RESOURCES
HILDA JUAREZ
DEPUTY DIRECTOR

EMPLOYEE
RELATIONS &
RETURN TO
WORK
CARLOS
FRANCO
HUMAN
RESOURCES
MANAGER

RECRUITMENT &
RECORDS MANAGER
ALEX BOCICOR
HUMAN RESOURCES
MANAGER

EMPLOYEE
RELATIONS TEAM
& CLASS AND
COMP
BRIANNA
CORDOVA
HUMAN
RESOURCES
ADMINISTRATOR

EMPLOYEE
RELATIONS TEAM
ALINA COMAN
HUMAN
RESOURCES
ADMINISTRATOR

EMPLOYEE
RELATIONS TEAM
JULIANA
AMEZCUA
HUMAN
RESOURCES
ADMINISTRATOR

EMPLOYEE
RELATIONS TEAM
ANDREA
RAMIREZ
HUMAN
RESOURCES
ADMINISTRATOR

EMPLOYEE
RELATIONS TEAM
TASSIANA
MERVILUS
HUMAN
RESOURCES
ADMINISTRATOR

EMPLOYEE
RELATIONS TEAM
KARLA
TORRES
HUMAN
RESOURCES
ADMINISTRATOR

EMPLOYEE
RELATIONS TEAM
CLAIRE SUGGS
HUMAN
RESOURCES
ADMINISTRATOR

RETURN TO WORK
TEAM
VANESSA
SANCHEZ
HUMAN
RESOURCES
ANALYST

RECRUITMENT TEAM
DORI EDLES
(INTERIM)
HUMAN RESOURCES
ANALYST

REFERRAL TEAM
CHERRY WARD
HUMAN RESOURCES
ANALYST

EMPLOYEE RELATIONS
TEAM
VACANT
HUMAN RESOURCES
ANALYST

Administrative Services/OC Information Technology

OC INFORMATION TECHNOLOGY

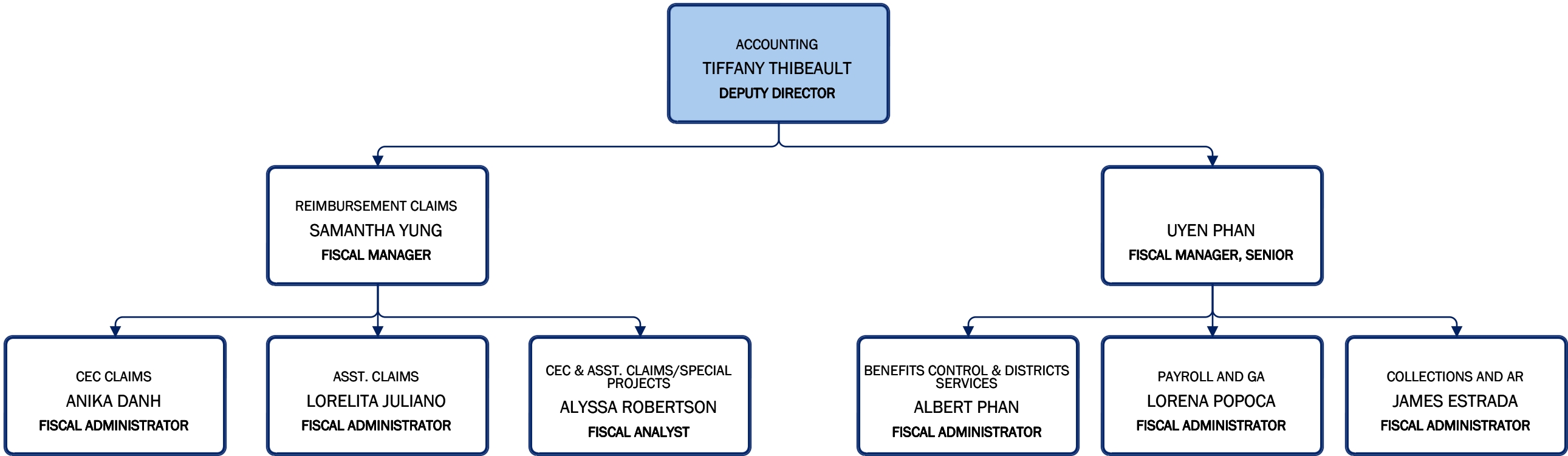
BUSINESS RELATIONSHIP
MANAGEMENT
BRIAN CLARK
BUSINESS RELATIONS MANAGER

APPLICATION SERVICES
VIPUL BHAVSAR
TECHNOLOGY SERVICES MANAGER,
SENIOR

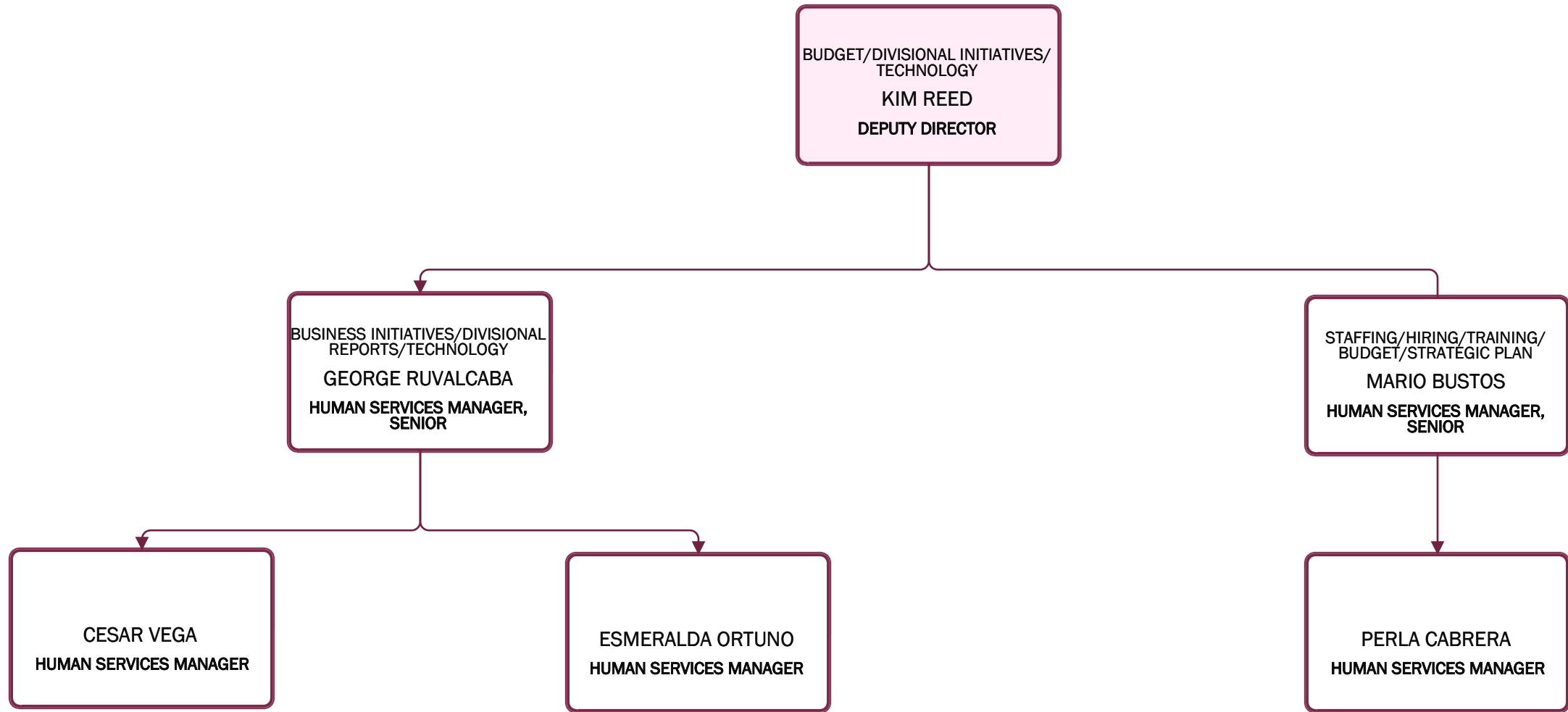
DATA CENTER SERVICES
TODD BATES
TECHNOLOGY SERVICES MANAGER,
SENIOR

DATA CENTER SERVICES
SIMMI SINGH
TECHNOLOGY SERVICES MANAGER

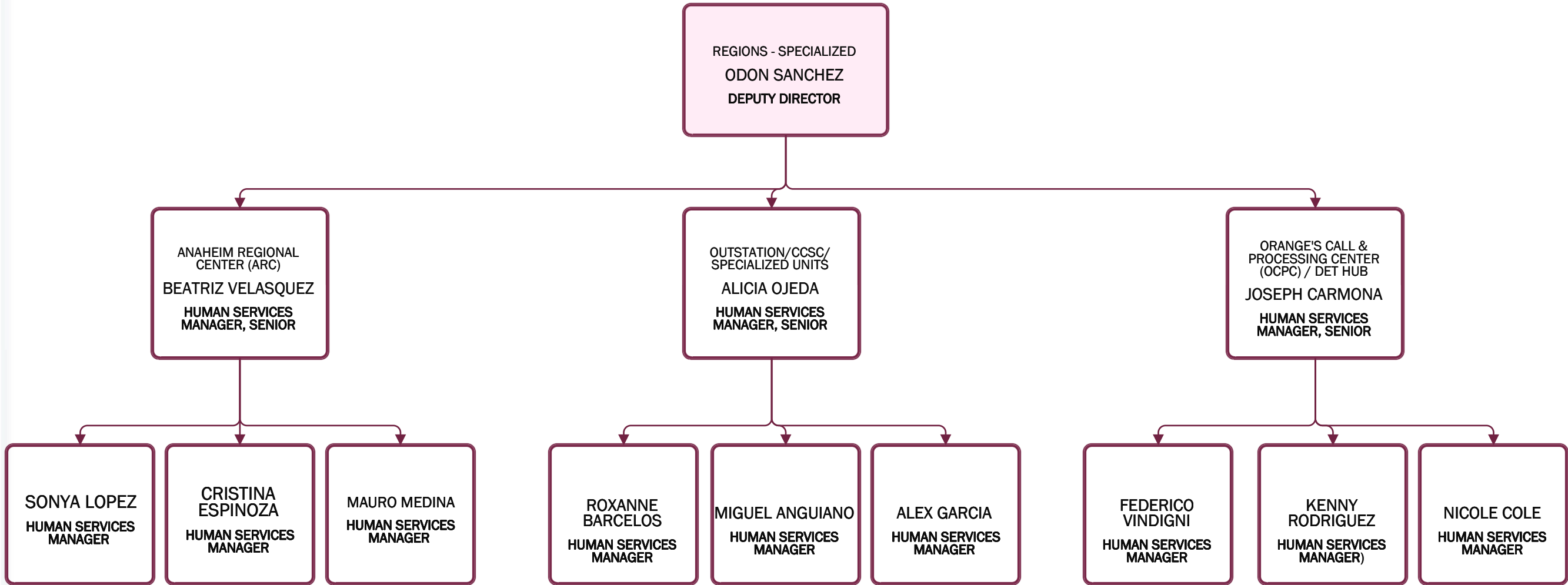
Administrative Services/Accounting



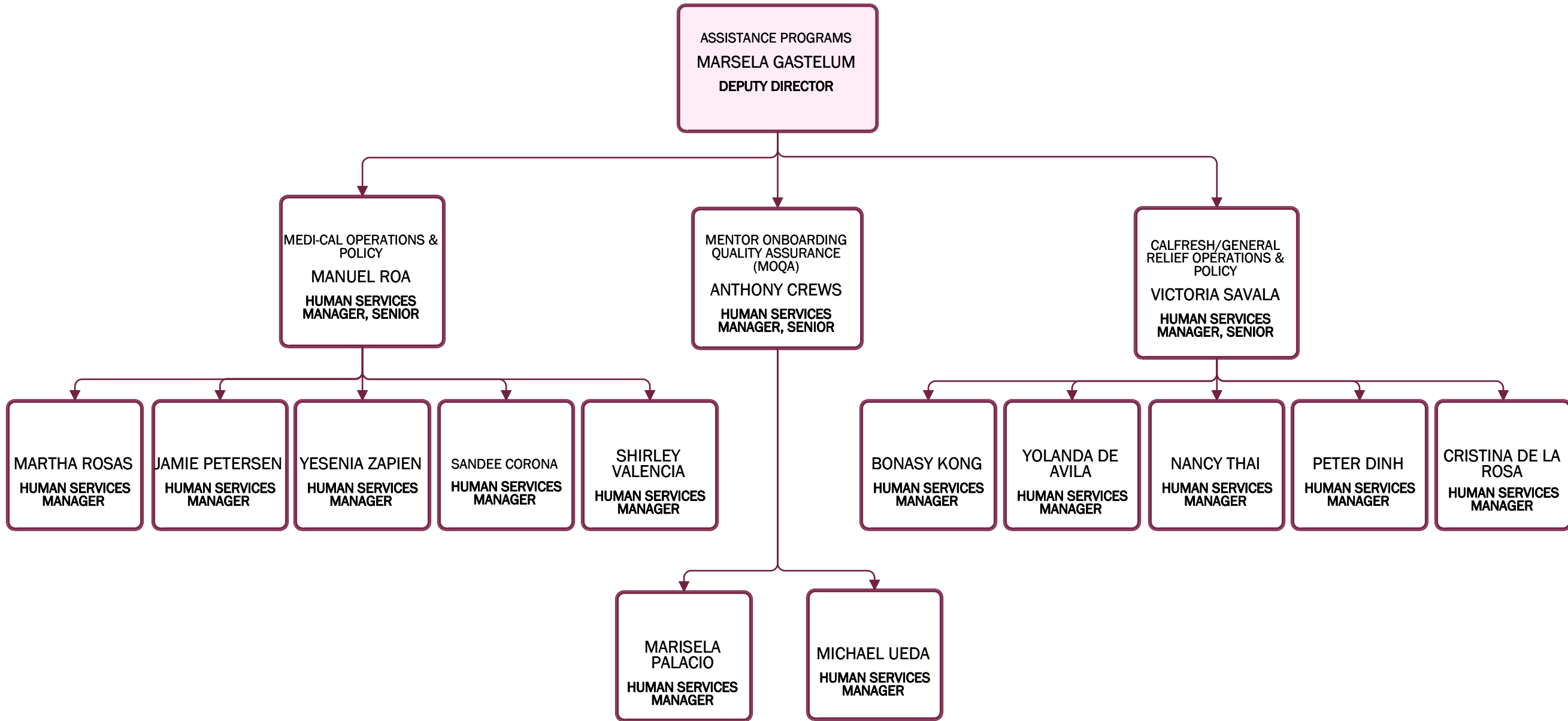
Assistance Programs/Operations/Initiatives/Budget



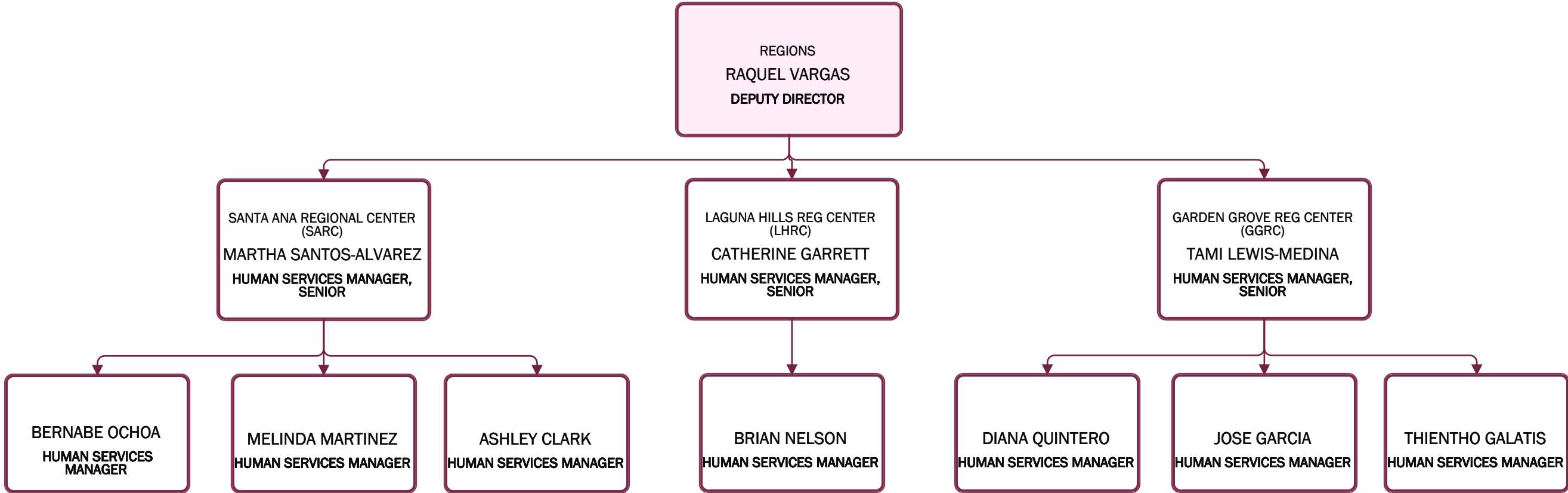
Assistance Programs/Regions - Specialized



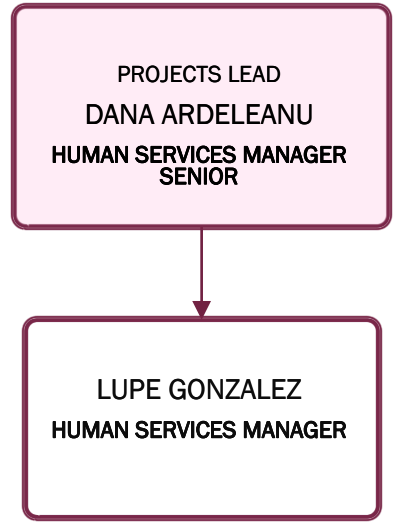
Assistance Programs



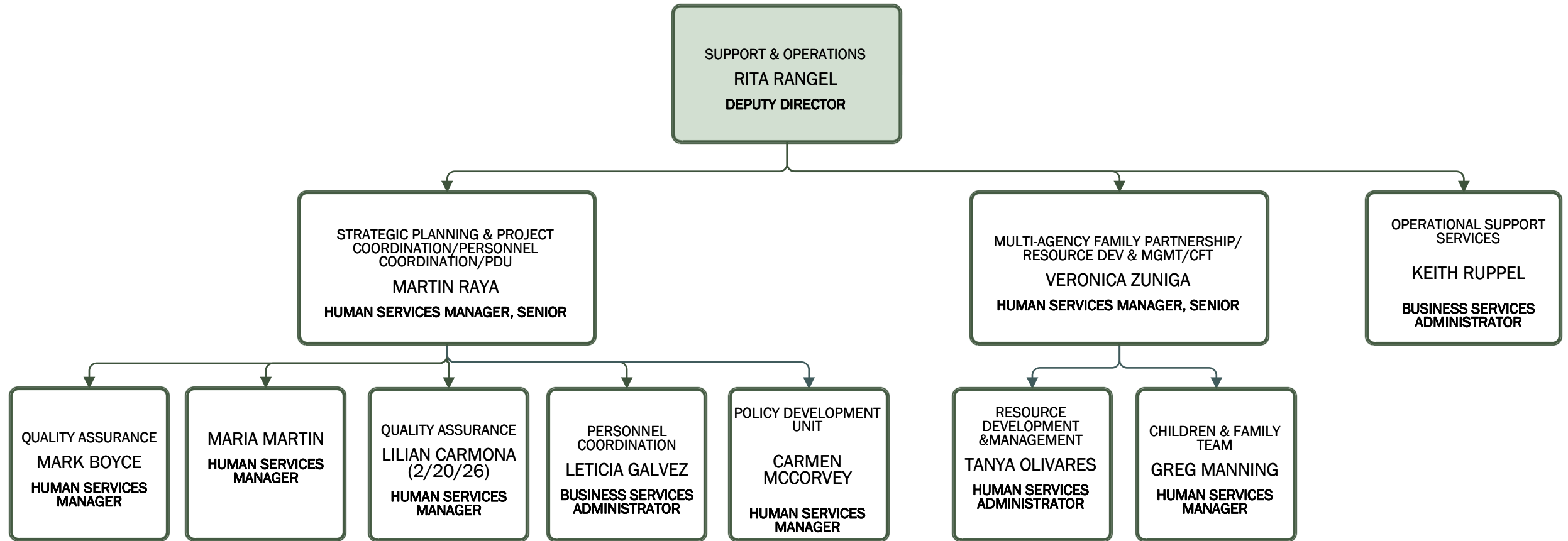
Assistance Programs/Regions



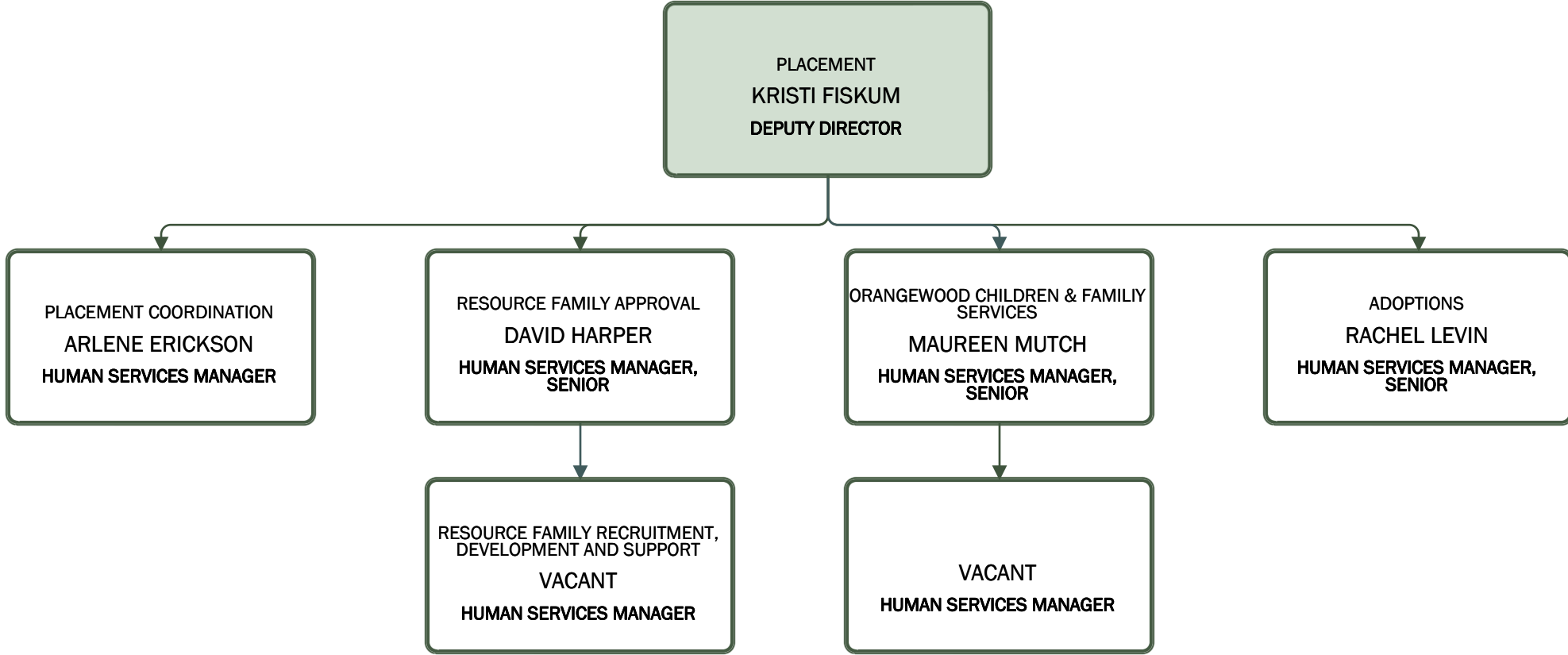
Assistance Programs/Projects Lead



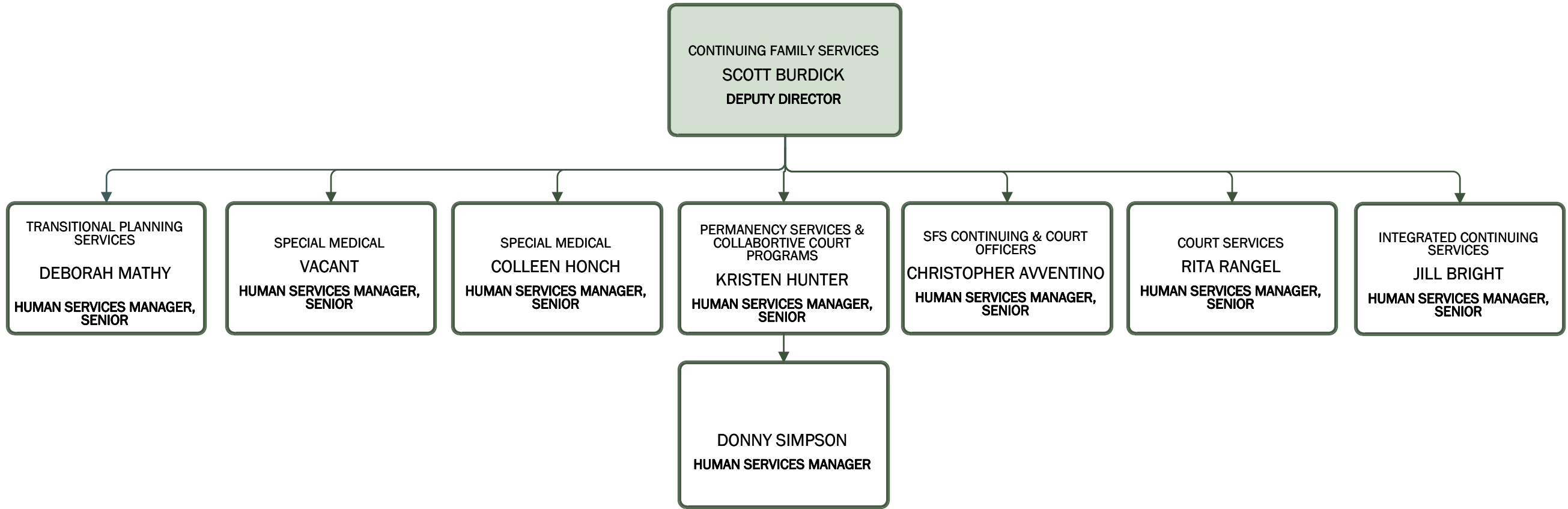
Children & Family Services/Planning & Permanency Services



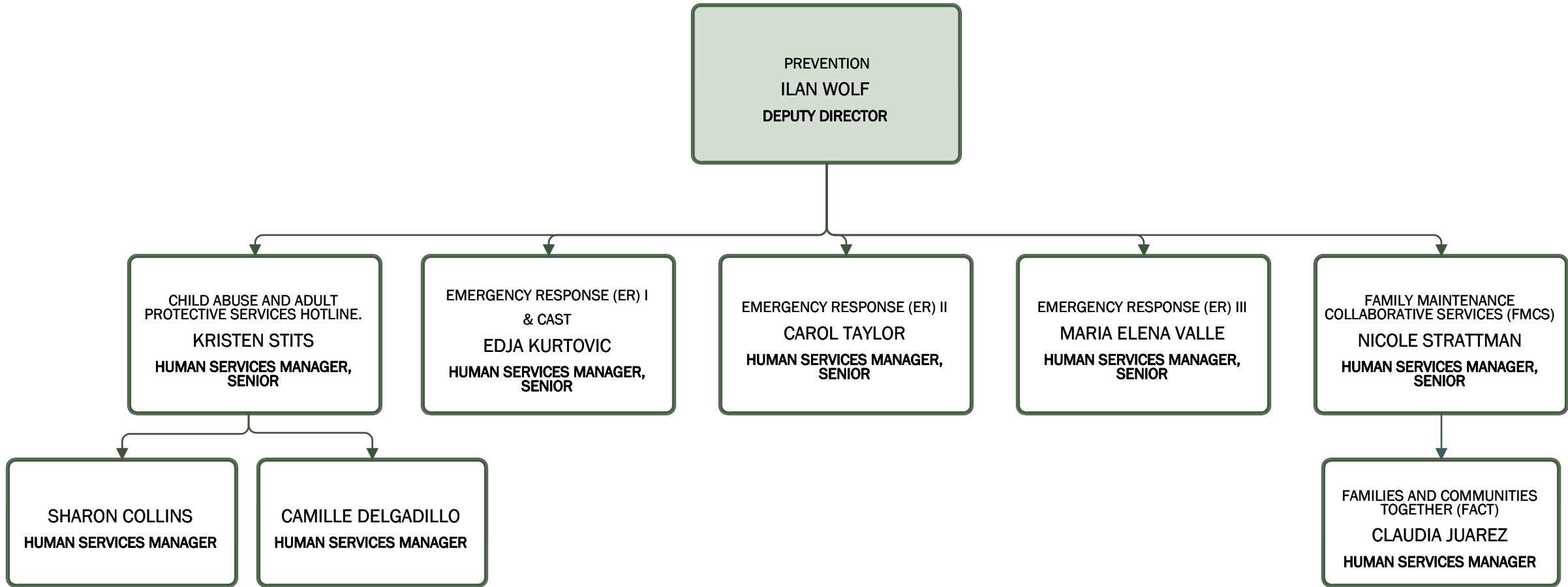
Children & Family Services/Placement



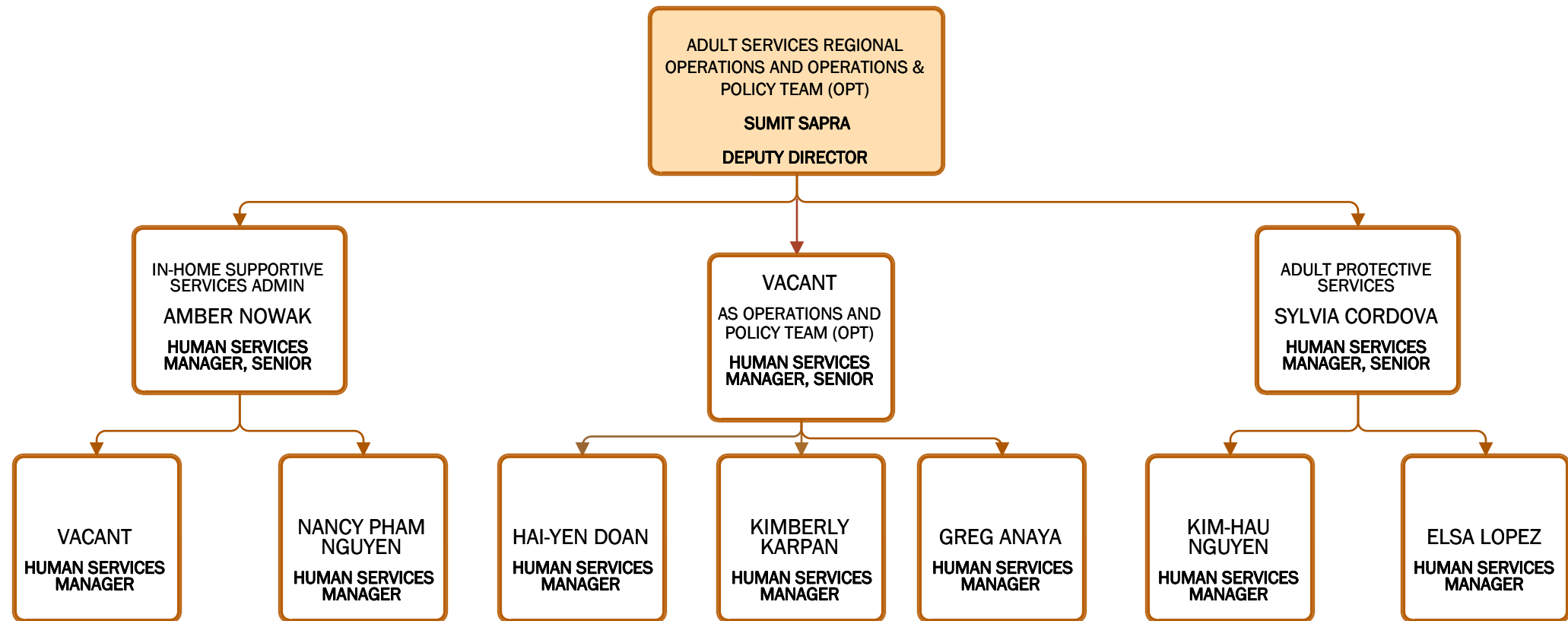
Children & Family Services/Continuing Family Services



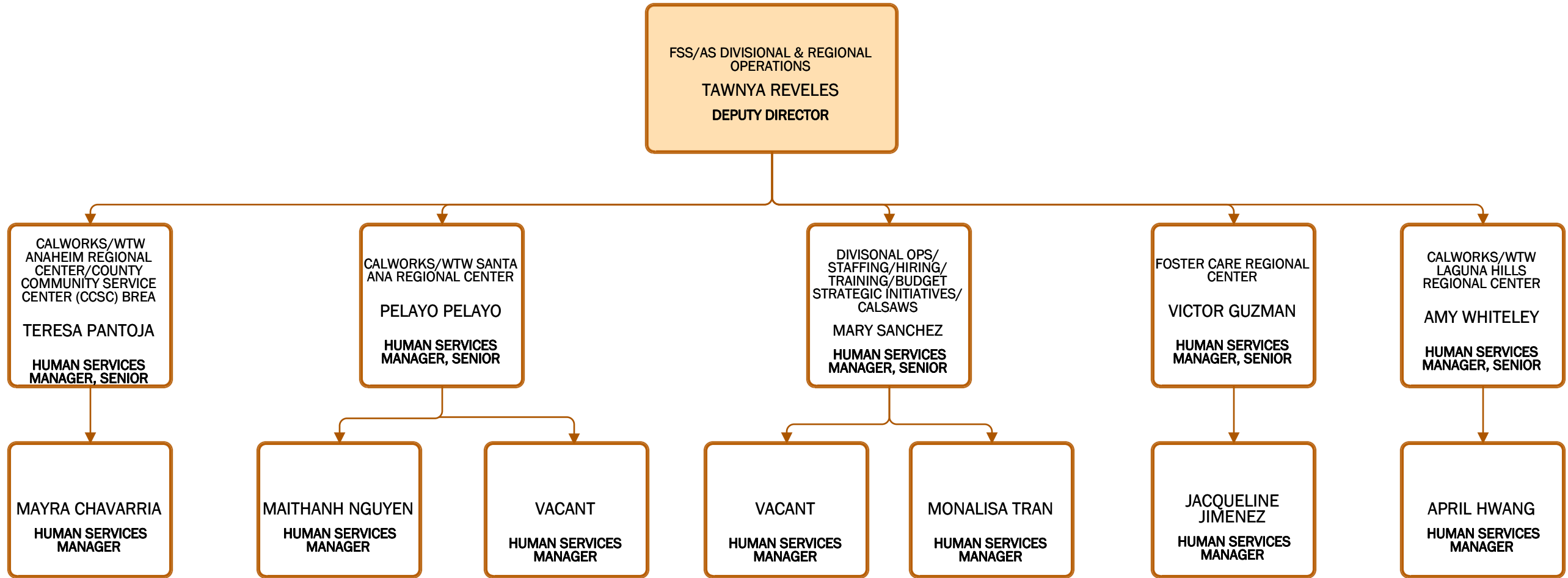
Children & Family Services/Prevention



Family Self-Sufficiency and Adult Services/Adult Services



Family Self-Sufficiency and Adult Services/Divisional & Regional Operations



Family Self-Sufficiency and Adult Services/Operations & Policy Team (OPT)

