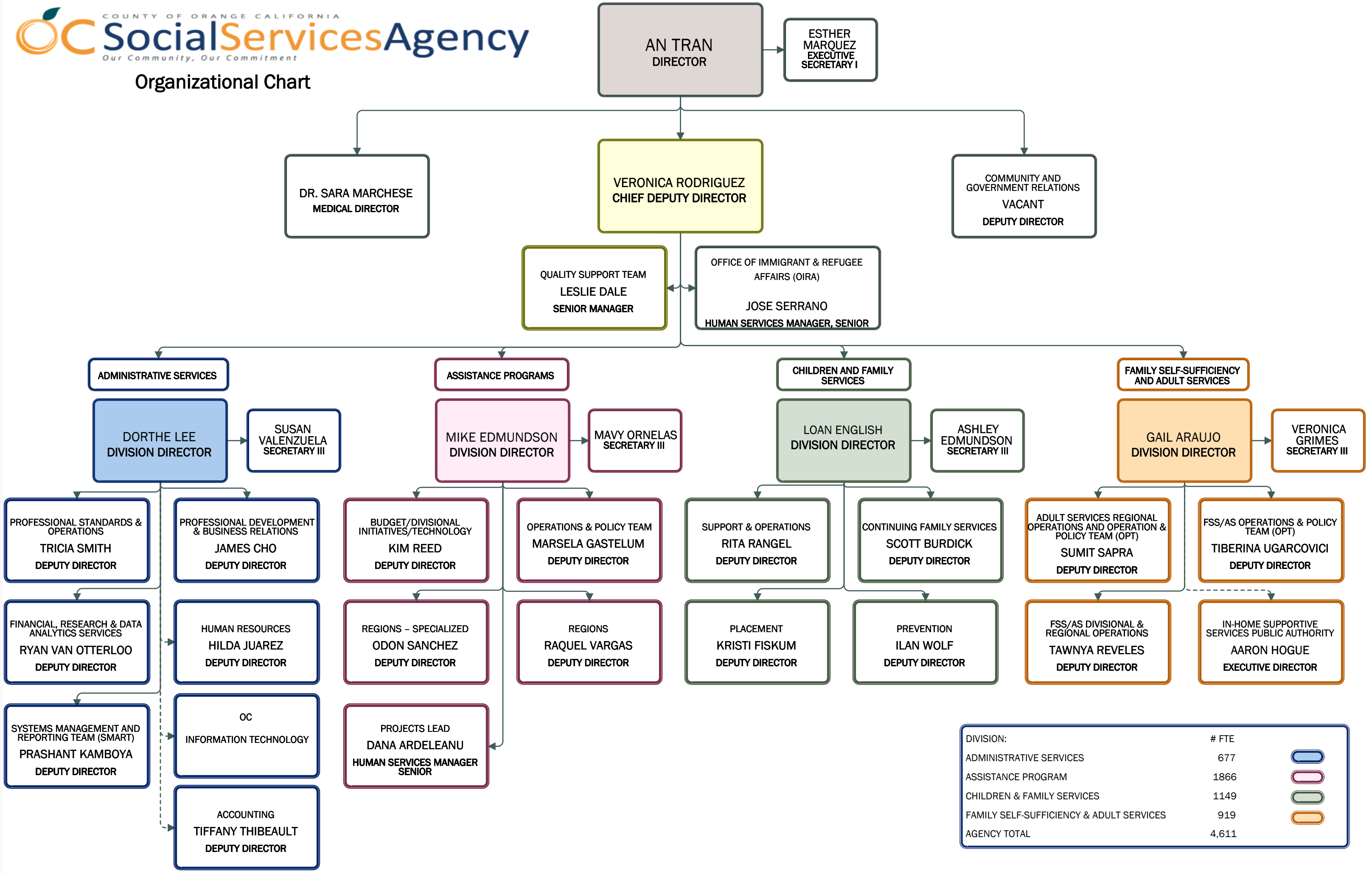


Organizational Chart



DIVISION:	# FTE	
ADMINISTRATIVE SERVICES	677	<div></div>
ASSISTANCE PROGRAM	1866	<div></div>
CHILDREN & FAMILY SERVICES	1149	<div></div>
FAMILY SELF-SUFFICIENCY & ADULT SERVICES	919	<div></div>
AGENCY TOTAL	4,611	

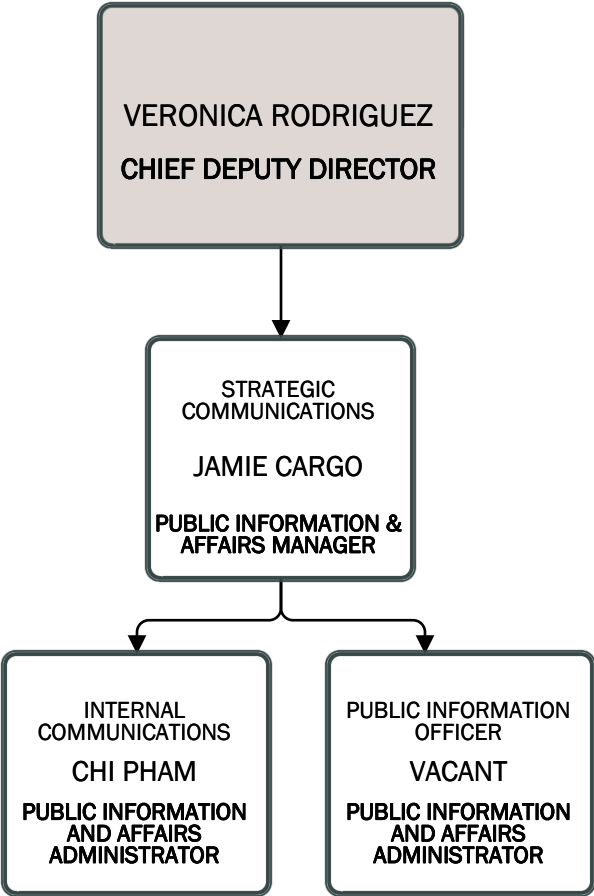
Medical Director's Office

DR. SARA MARCHESE
MEDICAL DIRECTOR

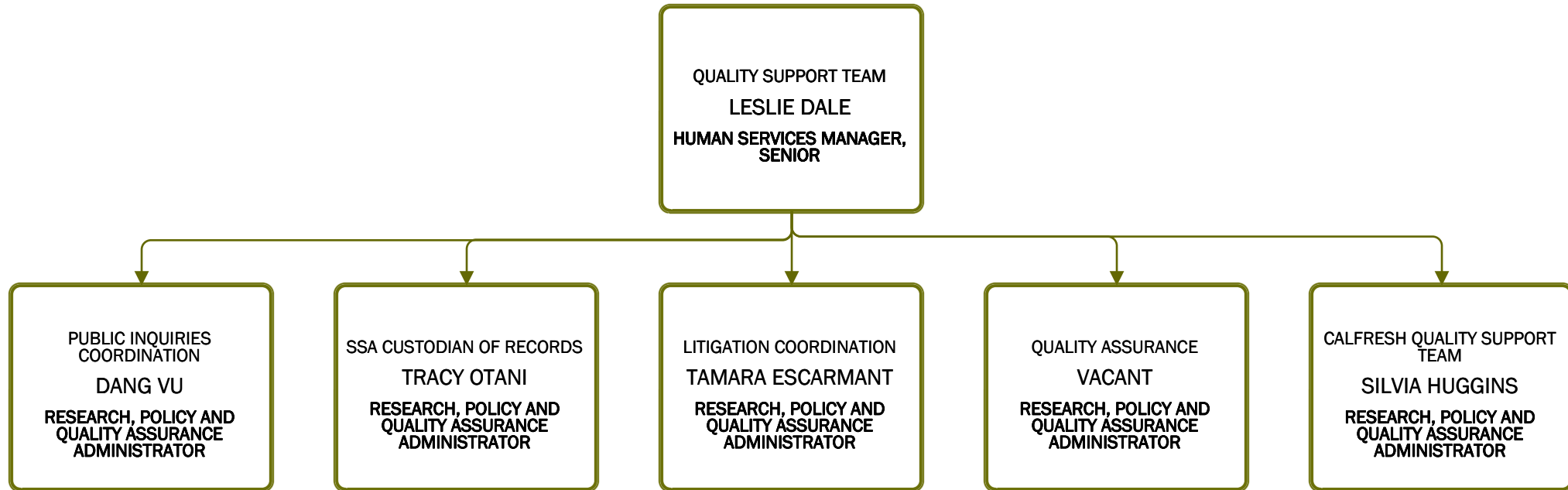


ARLENE MIRANDA
HUMAN SERVICES ADMINISTRATOR

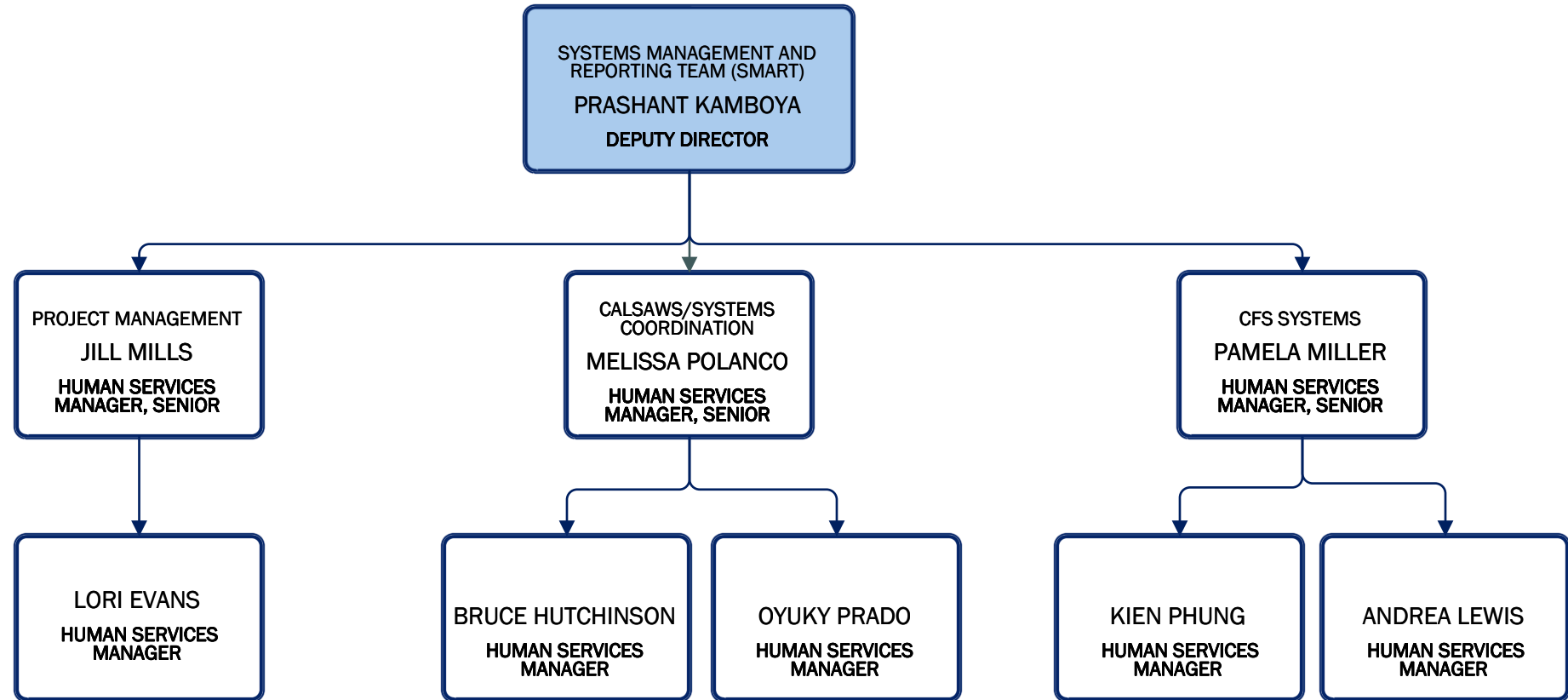
Administrative Services/Strategic Communications



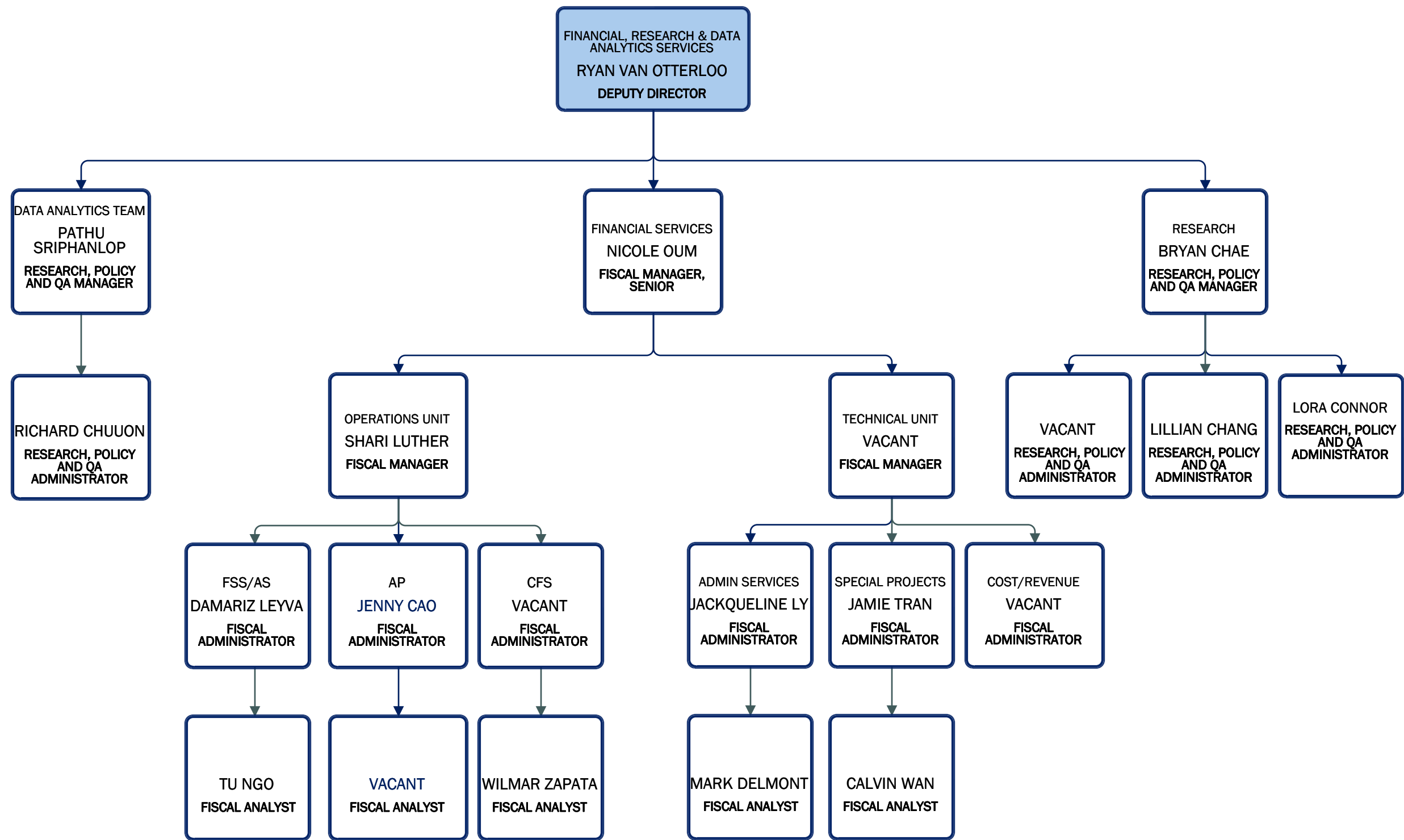
Administrative Services/Quality Support Team



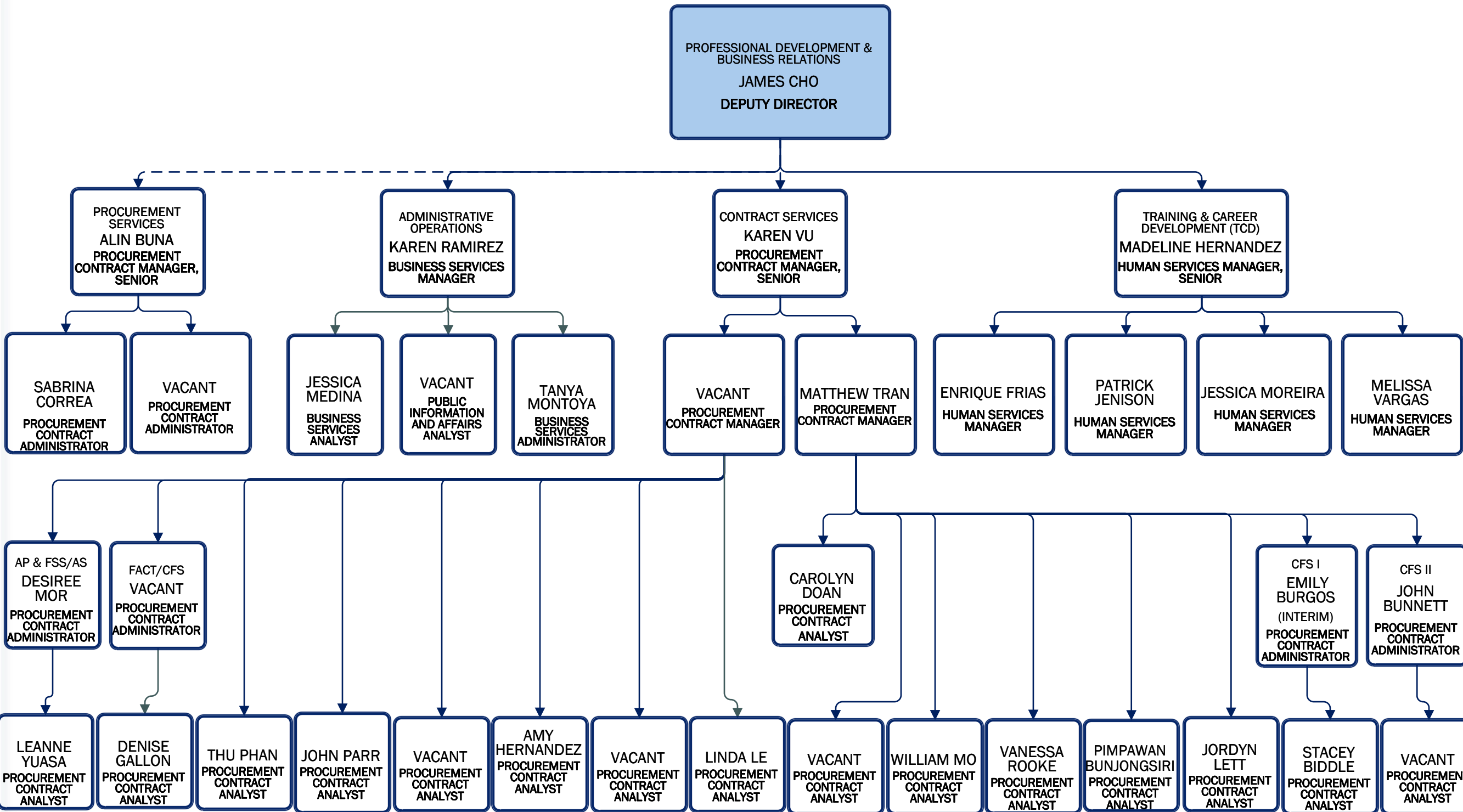
Administrative Services/Systems Management and Reporting Team (SMART)



Administrative Services/Financial, Research & Data Analytics Services



Administrative Services/Professional Development & Business Relations



Administrative Services/Professional Standards & Operations

PROFESSIONAL STANDARDS &
OPERATIONS
TRICIA SMITH
DEPUTY DIRECTOR

CENTRALIZED
OPERATIONS
GAIL BLANSETT
HUMAN SERVICES
MANAGER, SENIOR

EMERGENCY
MANAGEMENT AND
SAFETY
ANGELA
DIBENEDETTO
BUSINESS SERVICES
MANAGER, SENIOR

FACILITIES
MANAGEMENT
AL PASILLAS
BUSINESS SERVICES
MANAGER, SENIOR

COMMUNITY
ENGAGEMENT
LOREEN
MONTAGNON
PUBLIC INFORMATION
AND AFFAIRS MANAGER

DIVERSITY EQUITY &
INCLUSION MANAGER
ERIC CARNAJE
PUBLIC INFORMATION
& AFFAIRS MANAGER

PROGRAM INTEGRITY
STACY LEE
HUMAN SERVICES
MANAGER, SENIOR

CENTRALIZED MAIL &
IMAGING CENTER
(CMIC)
BENJAMIN DIAZ
BUSINESS SERVICES
ADMINISTRATOR

COMMUNICATION
DEVICES, OP SANTA,
SR. SANTA & FRIENDS
MELISSA VEGA
BUSINESS SERVICES
ADMINISTRATOR

CAP ASSETS,
CONTRACTS, FORMS
CONTROL, MAILROOM
& WAREHOUSE
RODNEY WATERS
BUSINESS SERVICES
ADMINISTRATOR

COMMUNITY OUTREACH
CRISTAL PEREZ
HUMAN SERVICES
MANAGER

INCOME ELIGIBILITY
VERIFICATION SYSTEM,
FRAUD REVIEW UNIT
DIEN PHAM
RESEARCH, POLICY
AND QA
ADMINISTRATOR

GRIEVANCE REVIEW
OFFICER
LISA ESTRADA-
WOOD
RESEARCH, POLICY
AND QA
ADMINISTRATOR

APPEALS
ALICIA MARTINEZ
HUMAN SERVICES
MANAGER

SAFETY TRAINING
OFFICER
JUANITA TREJO-
MIDDLETON
RISK MANAGEMENT
ADMINISTRATOR

EMERGENCY
MANAGEMENT
RANDALL HARPER
EMERGENCY MANAGER

EMERGENCY
MANAGEMENT
ETHAN BROWN
EMERGENCY
MANAGEMENT
ADMINISTRATOR

BUILDING
MANAGEMENT
KIET NGUYEN
BUSINESS SERVICES
ADMINISTRATOR

BUILDING
MANAGEMENT
PETER WARREN
BUSINESS SERVICES
ADMINISTRATOR

BUILDING
MANAGEMENT
CHRISTOPHER
ZAVOURIS
BUSINESS SERVICES
ADMINISTRATOR

REAL ESTATE
ESTELA SALDANA
REAL PROP AGENT III

CLAUDIA GOMEZ
BUSINESS SERVICES
ANALYST

ALBERT GARZA
BUSINESS SERVICES
ANALYST

Administrative Services/Human Resources

HUMAN RESOURCES
HILDA JUAREZ
DEPUTY DIRECTOR

EMPLOYEE
RELATIONS &
RETURN TO
WORK
CARLOS
FRANCO
HUMAN
RESOURCES
MANAGER

RECRUITMENT &
RECORDS MANAGER
ALEX BOCICOR
HUMAN RESOURCES
MANAGER

EMPLOYEE
RELATIONS TEAM
& CLASS AND
COMP
BRIANNA
CORDOVA
HUMAN
RESOURCES
ADMINISTRATOR

EMPLOYEE
RELATIONS TEAM
ALINA COMAN
HUMAN
RESOURCES
ADMINISTRATOR

EMPLOYEE
RELATIONS TEAM
JULIANA
AMEZCUA
HUMAN
RESOURCES
ADMINISTRATOR

EMPLOYEE
RELATIONS TEAM
ANDREA
RAMIREZ
HUMAN
RESOURCES
ADMINISTRATOR

EMPLOYEE
RELATIONS TEAM
TASSIANA
MERVILUS
HUMAN
RESOURCES
ADMINISTRATOR

EMPLOYEE
RELATIONS TEAM
KARLA
TORRES
HUMAN
RESOURCES
ADMINISTRATOR

EMPLOYEE
RELATIONS TEAM
CLAIRE SUGGS
HUMAN
RESOURCES
ADMINISTRATOR

RETURN TO WORK
TEAM
VANESSA
SANCHEZ
HUMAN
RESOURCES
ANALYST

RECRUITMENT TEAM
DORI EDLES
(INTERIM)
HUMAN RESOURCES
ANALYST

REFERRAL TEAM
CHERRY WARD
HUMAN RESOURCES
ANALYST

EMPLOYEE RELATIONS
TEAM
VACANT
HUMAN RESOURCES
ANALYST

Administrative Services/OC Information Technology

OC INFORMATION TECHNOLOGY

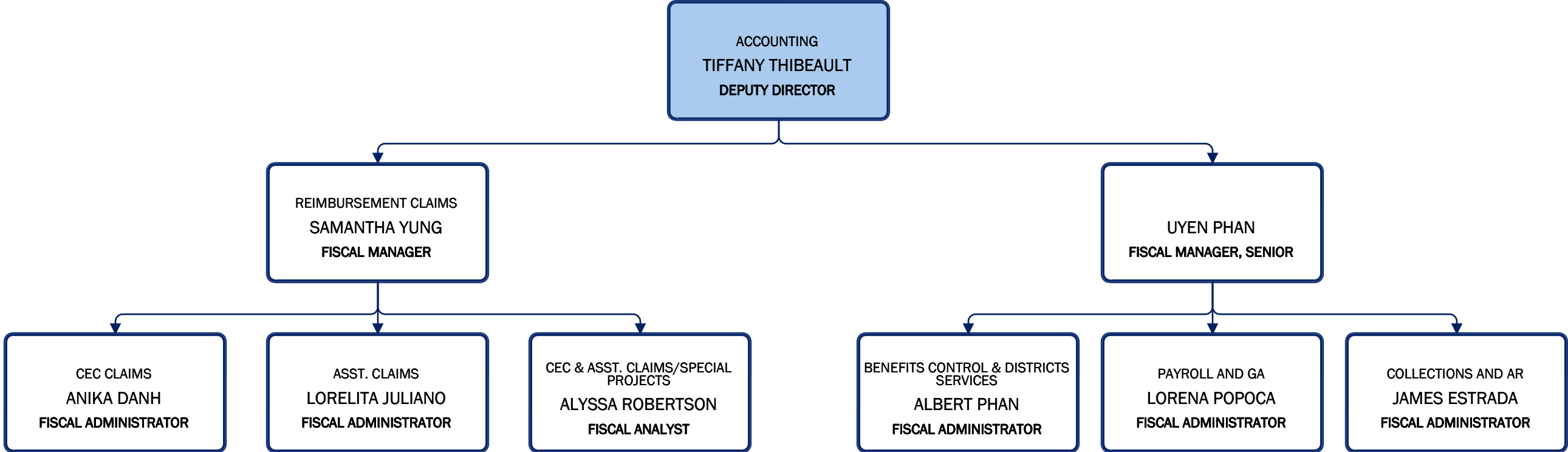
BUSINESS RELATIONSHIP
MANAGEMENT
BRIAN CLARK
BUSINESS RELATIONS MANAGER

APPLICATION SERVICES
VIPUL BHAVSAR
TECHNOLOGY SERVICES MANAGER,
SENIOR

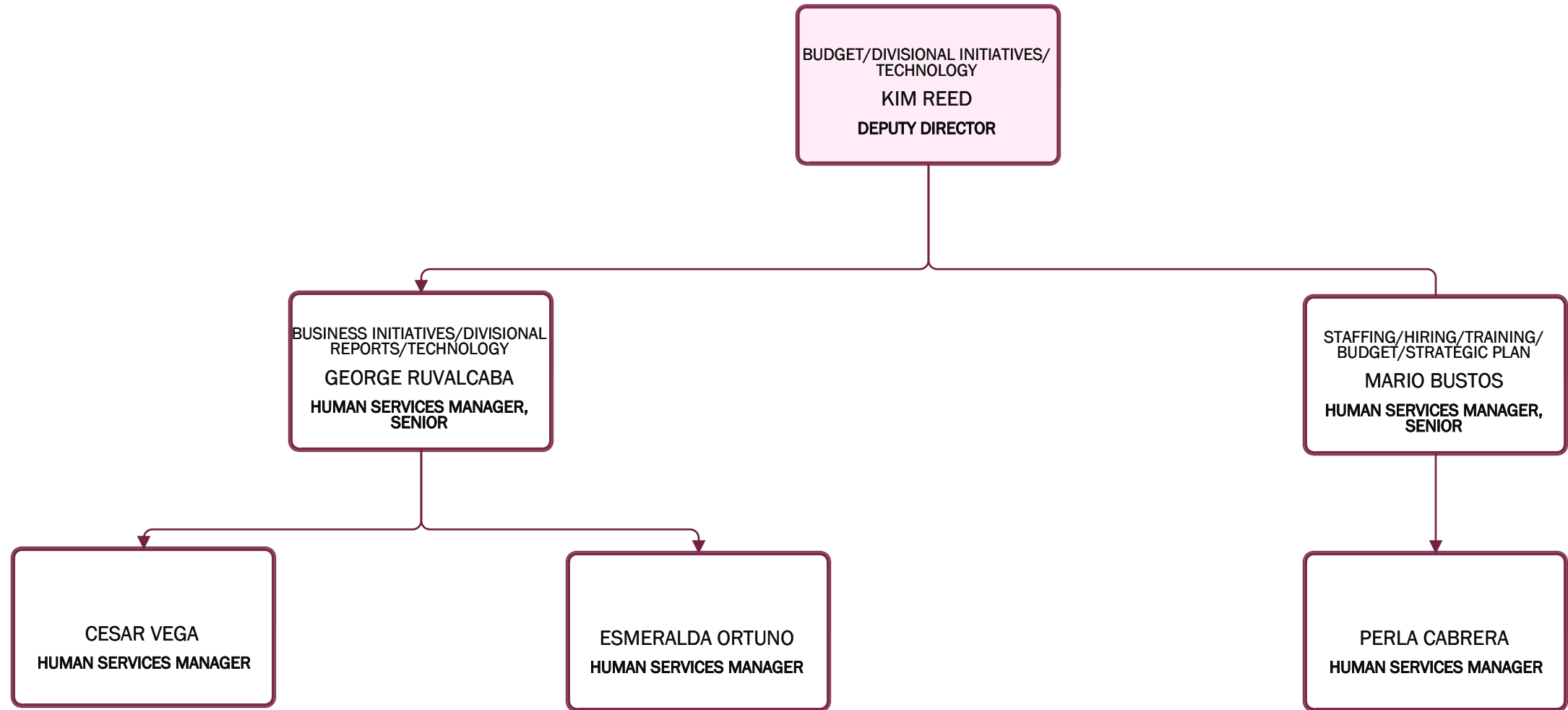
DATA CENTER SERVICES
TODD BATES
TECHNOLOGY SERVICES MANAGER,
SENIOR

DATA CENTER SERVICES
SIMMI SINGH
TECHNOLOGY SERVICES MANAGER

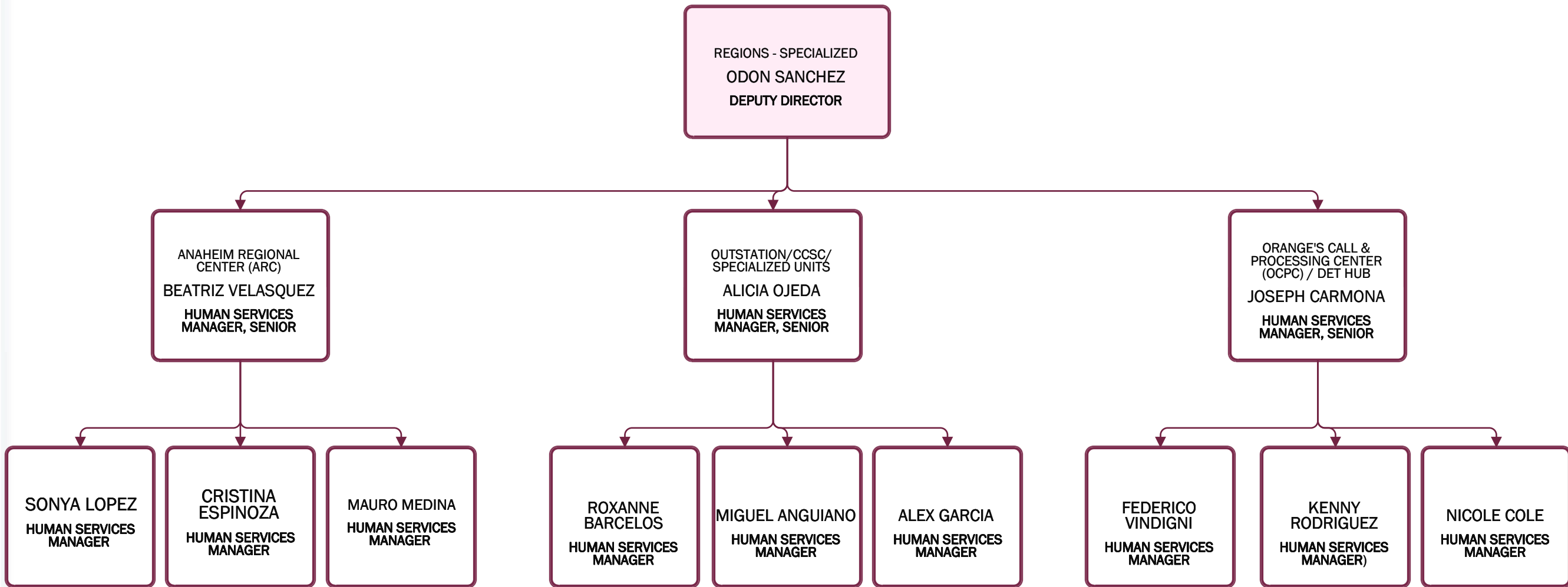
Administrative Services/Accounting



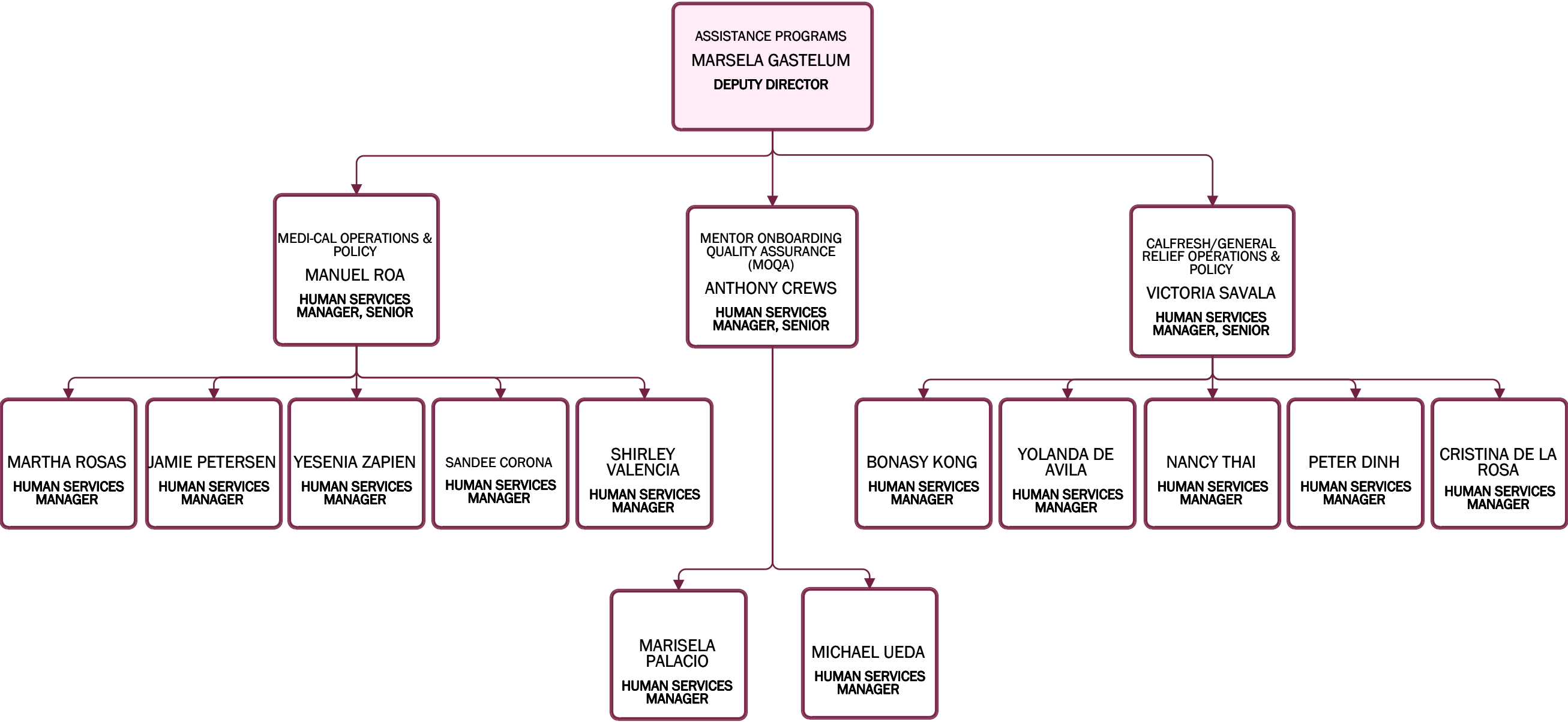
Assistance Programs/Operations/Initiatives/Budget



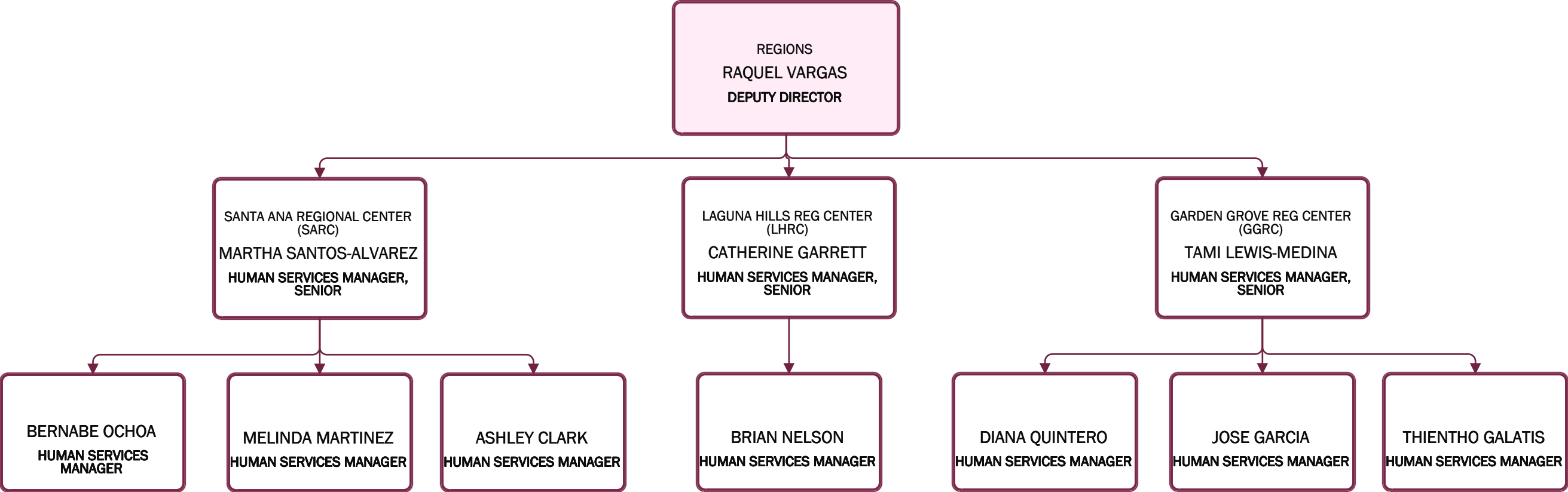
Assistance Programs/Regions - Specialized



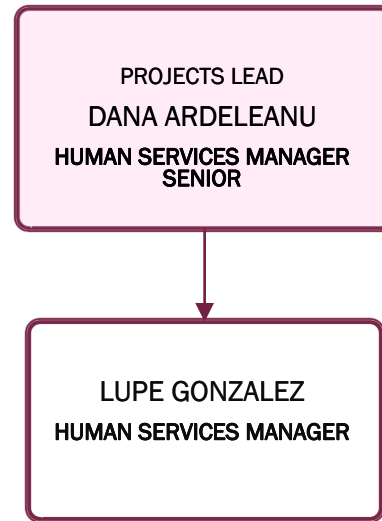
Assistance Programs



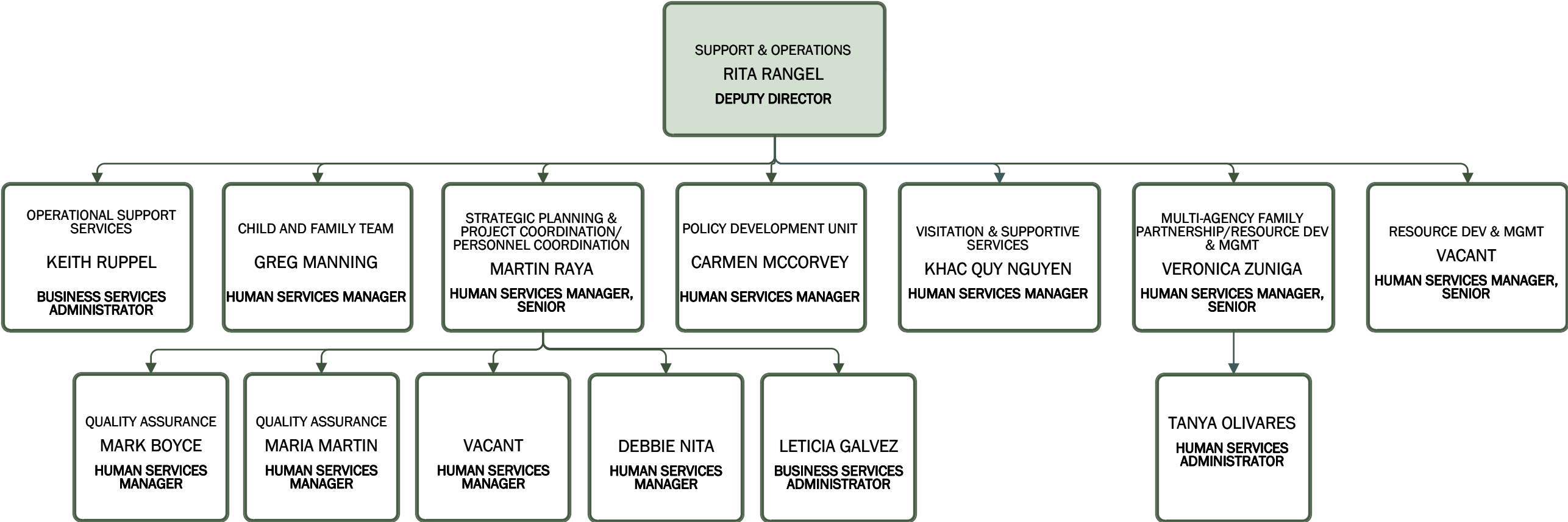
Assistance Programs/Regions



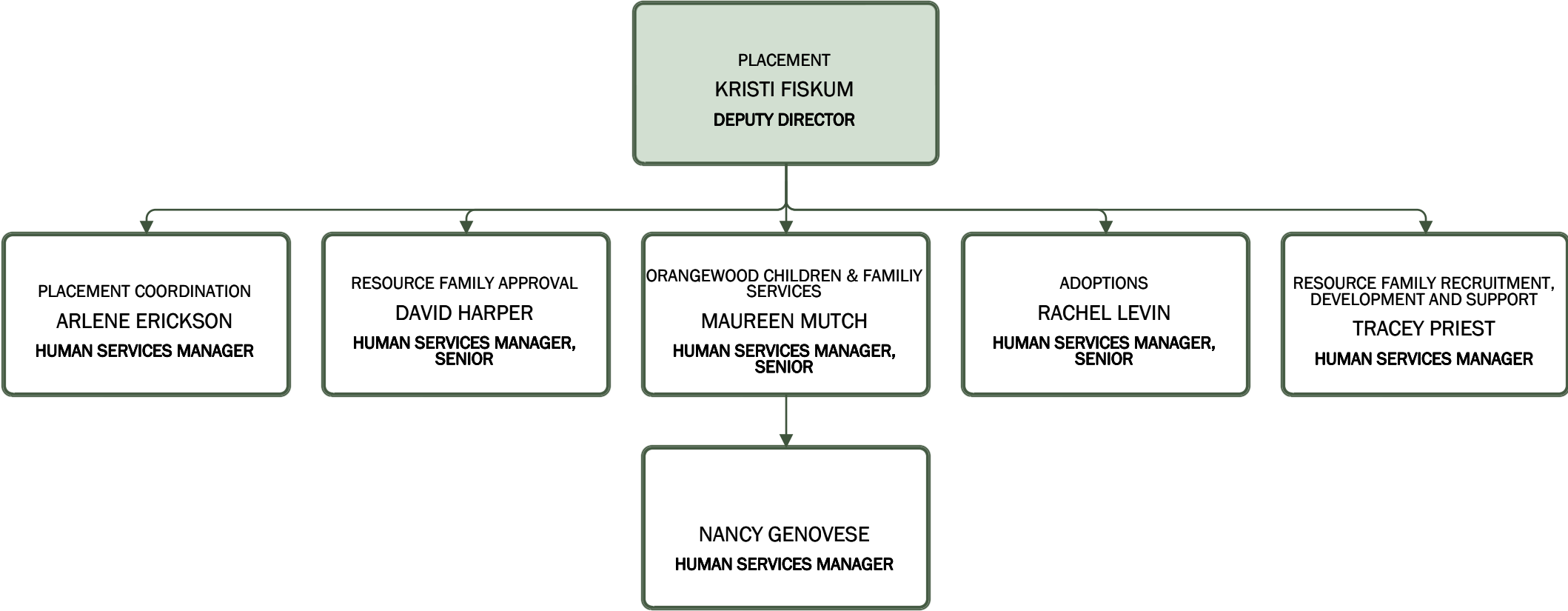
Assistance Programs/Projects Lead



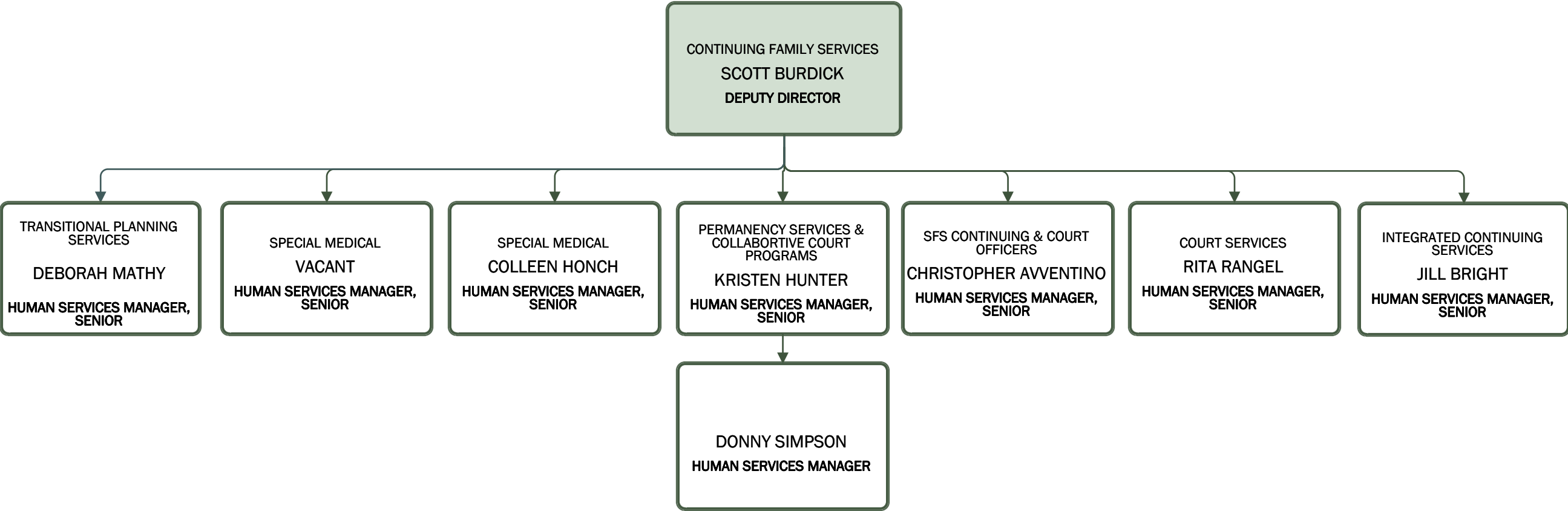
Children & Family Services/Planning & Permanency Services



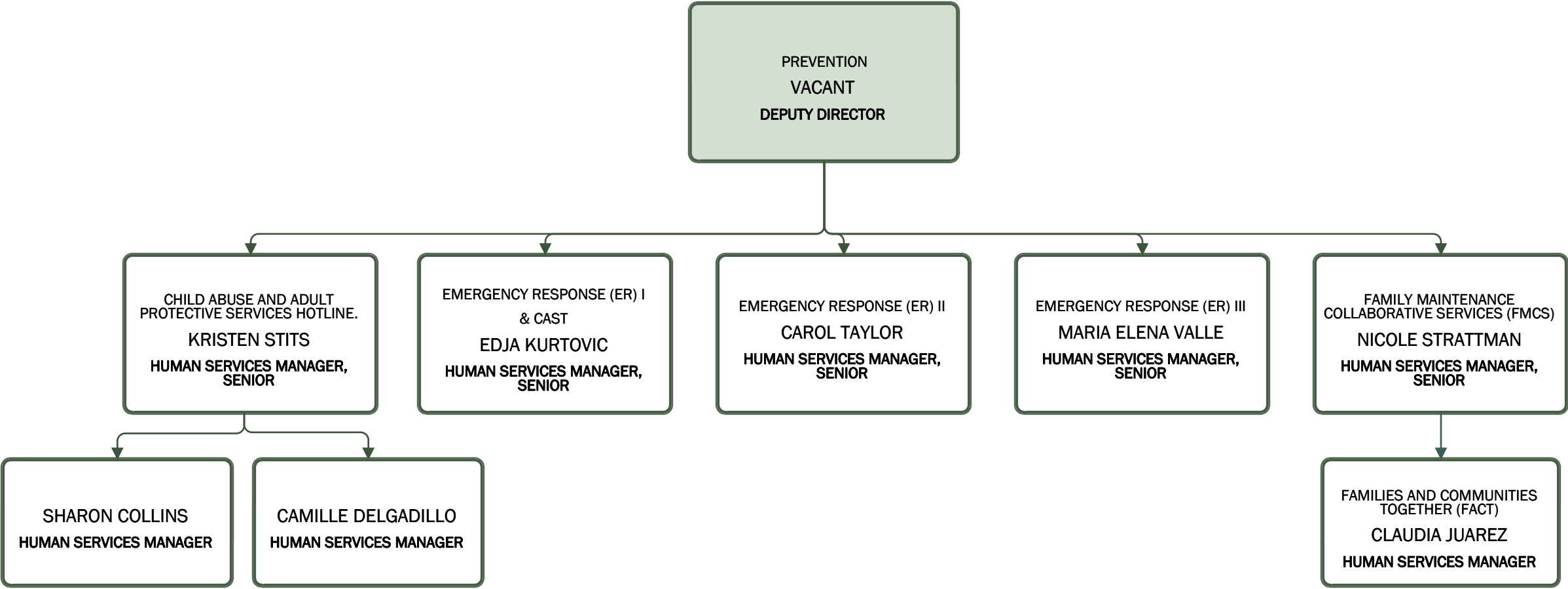
Children & Family Services/Placement



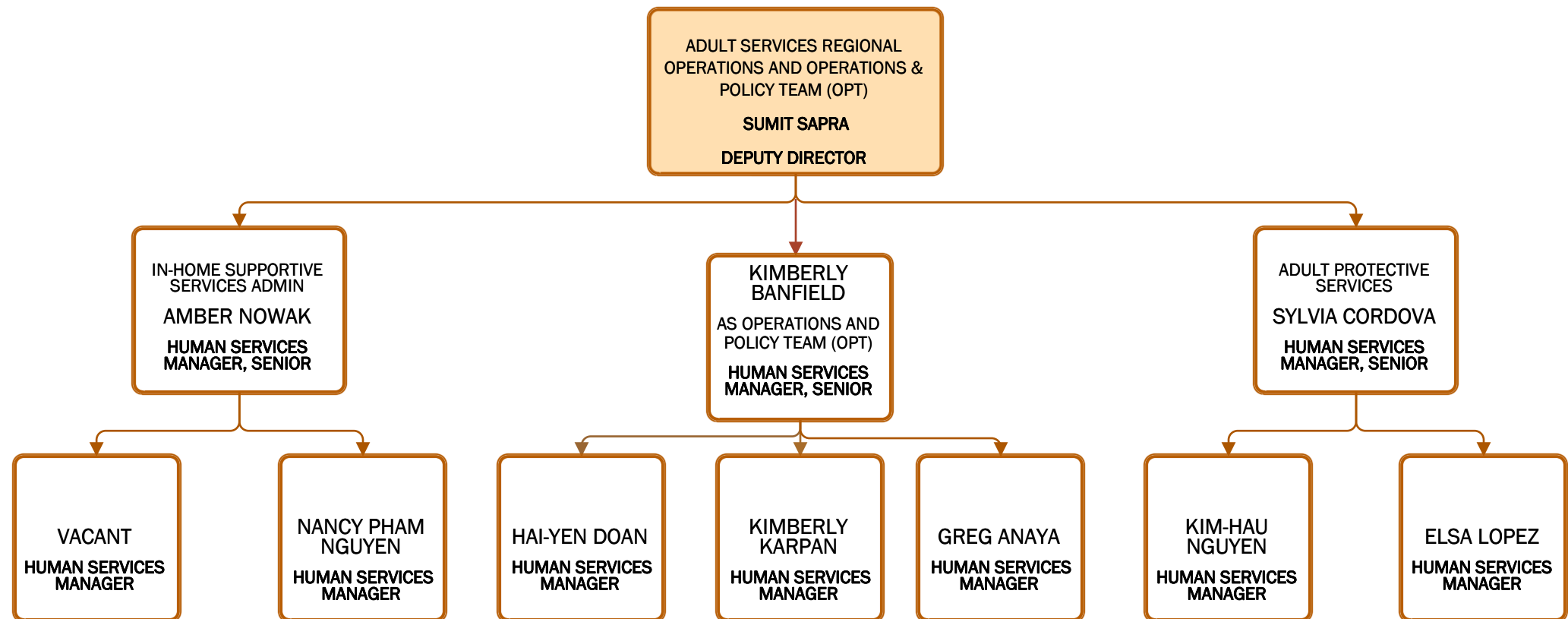
Children & Family Services/Continuing Family Services



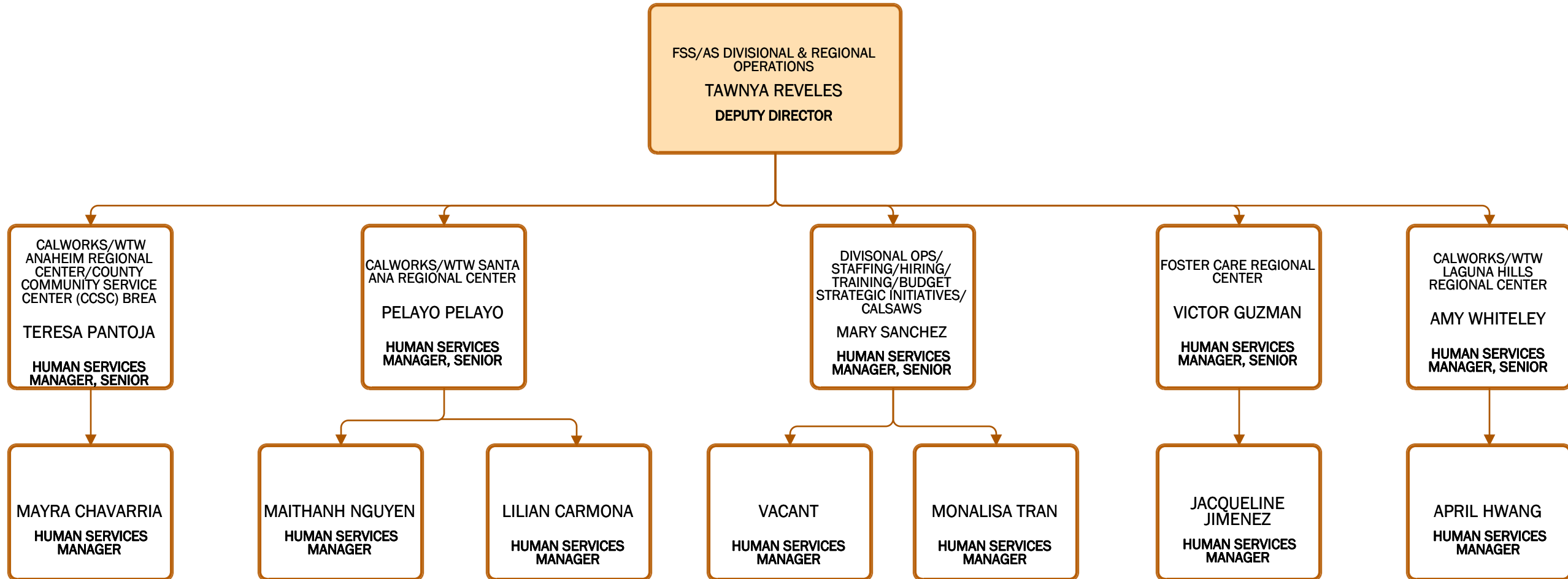
Children & Family Services/Prevention



Family Self-Sufficiency and Adult Services/Adult Services



Family Self-Sufficiency and Adult Services/Divisional & Regional Operations



Family Self-Sufficiency and Adult Services/Operations & Policy Team (OPT)

