

### Organizational Chart

**AN TRAN**  
 DIRECTOR

**ESTHER MARQUEZ**  
 EXECUTIVE SECRETARY I

**DR. SARA MARCHESE**  
 MEDICAL DIRECTOR

**VERONICA RODRIGUEZ**  
 CHIEF DEPUTY DIRECTOR

**COMMUNITY AND GOVERNMENT RELATIONS**  
**JAMES CHO**  
 DEPUTY DIRECTOR

**QUALITY SUPPORT TEAM**  
**LESLIE DALE**  
 SENIOR MANAGER

**ADMINISTRATIVE SERVICES**

**ASSISTANCE PROGRAMS**

**CHILDREN AND FAMILY SERVICES**

**FAMILY SELF-SUFFICIENCY AND ADULT SERVICES**

**DORTHE LEE**  
 DIVISION DIRECTOR

**SUSAN VALENZUELA**  
 SECRETARY III

**MIKE EDMUNDSON**  
 DIVISION DIRECTOR

**MAVY ORNELAS**  
 SECRETARY III

**JYOTHI ATLURI**  
 DIVISION DIRECTOR

**ASHLEY EDMUNDSON**  
 SECRETARY III

**GAIL ARAUJO**  
 DIVISION DIRECTOR

**VERONICA GRIMES**  
 SECRETARY III

**PROFESSIONAL STANDARDS & OPERATIONS**  
**TRICIA SMITH**  
 DEPUTY DIRECTOR

**PROFESSIONAL DEVELOPMENT & BUSINESS RELATIONS**  
**TAWNYA REVELES**  
 DEPUTY DIRECTOR

**BUDGET/DIVISIONAL INITIATIVES/TECHNOLOGY**  
**KIM REED**  
 DEPUTY DIRECTOR

**OPERATIONS & POLICY TEAM**  
**MARSELA GASTELUM**  
 DEPUTY DIRECTOR

**PLANNING & PERMANENCY SERVICES**  
**ILAN WOLF**  
 DEPUTY DIRECTOR

**CONTINUING FAMILY SERVICES**  
**SCOTT BURDICK**  
 DEPUTY DIRECTOR

**ADULT SERVICES REGIONAL OPERATIONS AND OPERATION & POLICY TEAM (OPT)**  
**SUMIT SAPRA**  
 DEPUTY DIRECTOR

**FSS/AS OPERATIONS & POLICY TEAM (OPT)**  
**LOAN ENGLISH**  
 DEPUTY DIRECTOR

**FINANCIAL, RESEARCH & DATA ANALYTICS SERVICES**  
**RYAN VAN OTTERLOO**  
 DEPUTY DIRECTOR

**HUMAN RESOURCES**  
**HILDA JUAREZ**  
 DEPUTY DIRECTOR

**REGIONS - SPECIALIZED**  
**ODON SANCHEZ**  
 DEPUTY DIRECTOR

**REGIONS**  
**RAQUEL VARGAS**  
 DEPUTY DIRECTOR

**FAMILY ASSESSMENT & SHELTER SERVICES**  
**KRISTI FISKUM**  
 DEPUTY DIRECTOR

**INTERVENTION & PREVENTION SERVICES**  
**MO SAPIGA**  
 DEPUTY DIRECTOR

**FSS/AS DIVISIONAL & REGIONAL OPERATIONS**  
**TIBERINA UGARCOVICI**  
 DEPUTY DIRECTOR





**IN-HOME SUPPORTIVE SERVICES PUBLIC AUTHORITY**  
**AARON HOGUE**  
 EXECUTIVE DIRECTOR

**SYSTEMS MANAGEMENT AND REPORTING TEAM (SMART)**  
**PRASHANT KAMBOYA**  
 DEPUTY DIRECTOR

**OC INFORMATION TECHNOLOGY**

**PROJECTS LEAD**  
**DANA ARDELEANU**  
 HUMAN SERVICES MANAGER SENIOR

**ACCOUNTING**  
**TIFFANY THIBEAULT**  
 DEPUTY DIRECTOR

DIVISION:	# FTE	
ADMINISTRATIVE SERVICES	461	
ASSISTANCE PROGRAM	1938	
CHILDREN & FAMILY SERVICES	1299	
FAMILY SELF-SUFFICIENCY & ADULT SERVICES	972	
<b>AGENCY TOTAL</b>	<b>4,670</b>	

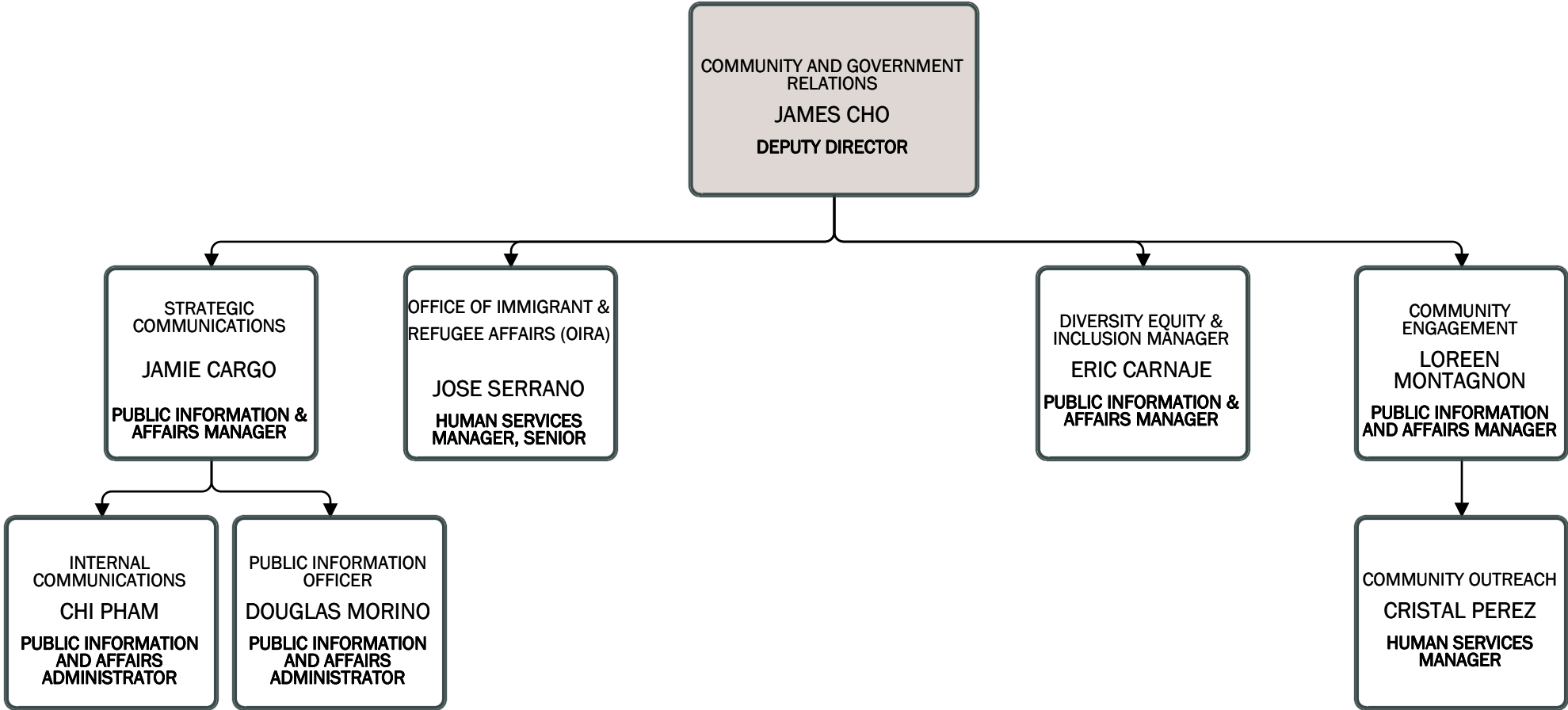
Medical Director's Office

DR. SARA MARCHESE  
MEDICAL DIRECTOR

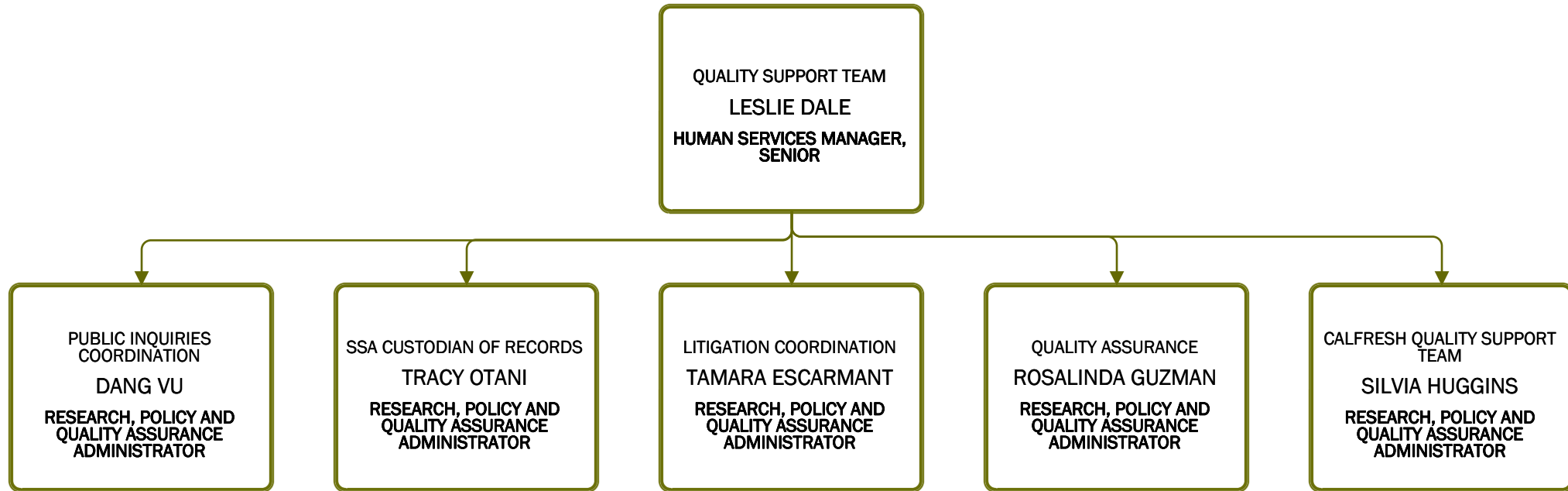


ARLENE MIRANDA  
HUMAN SERVICES ADMINISTRATOR

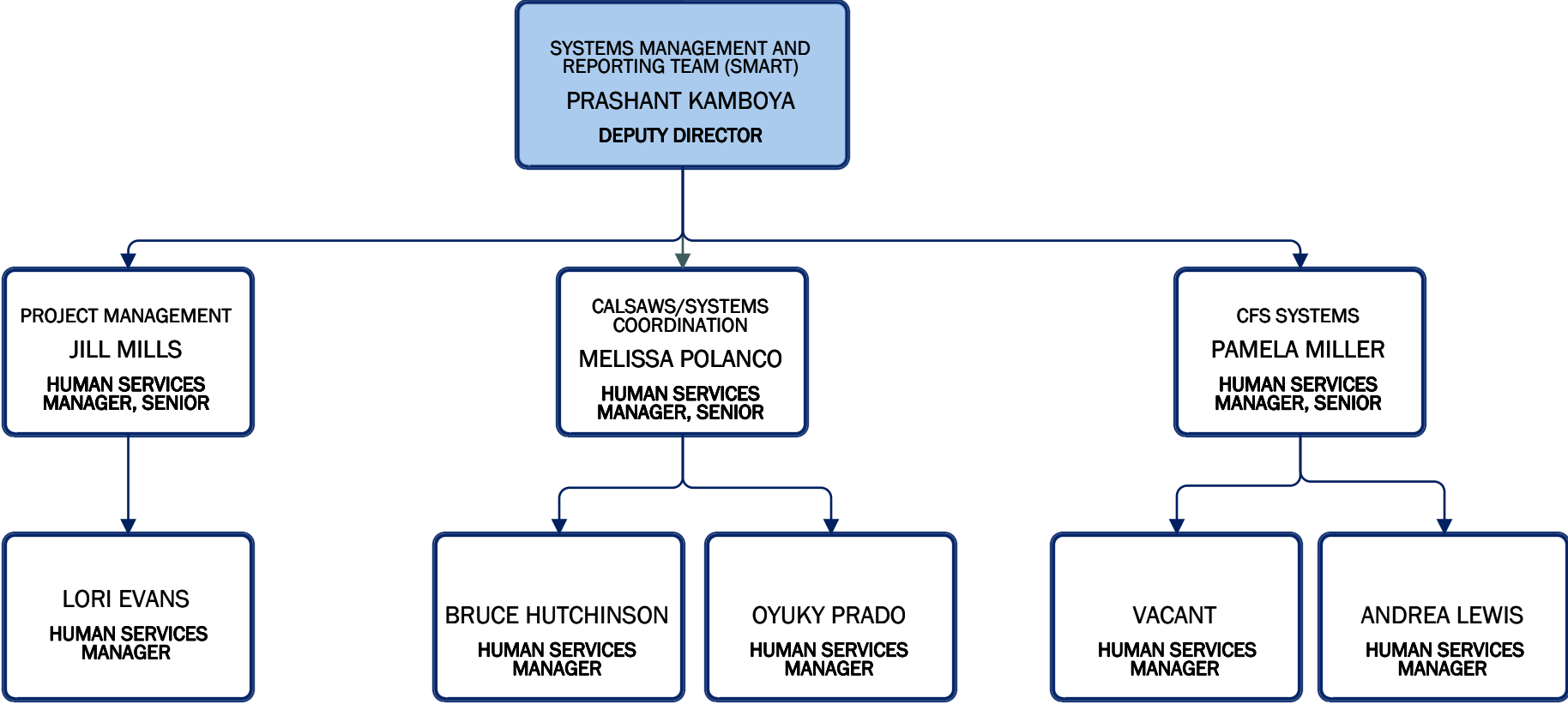
Community and Government Relations



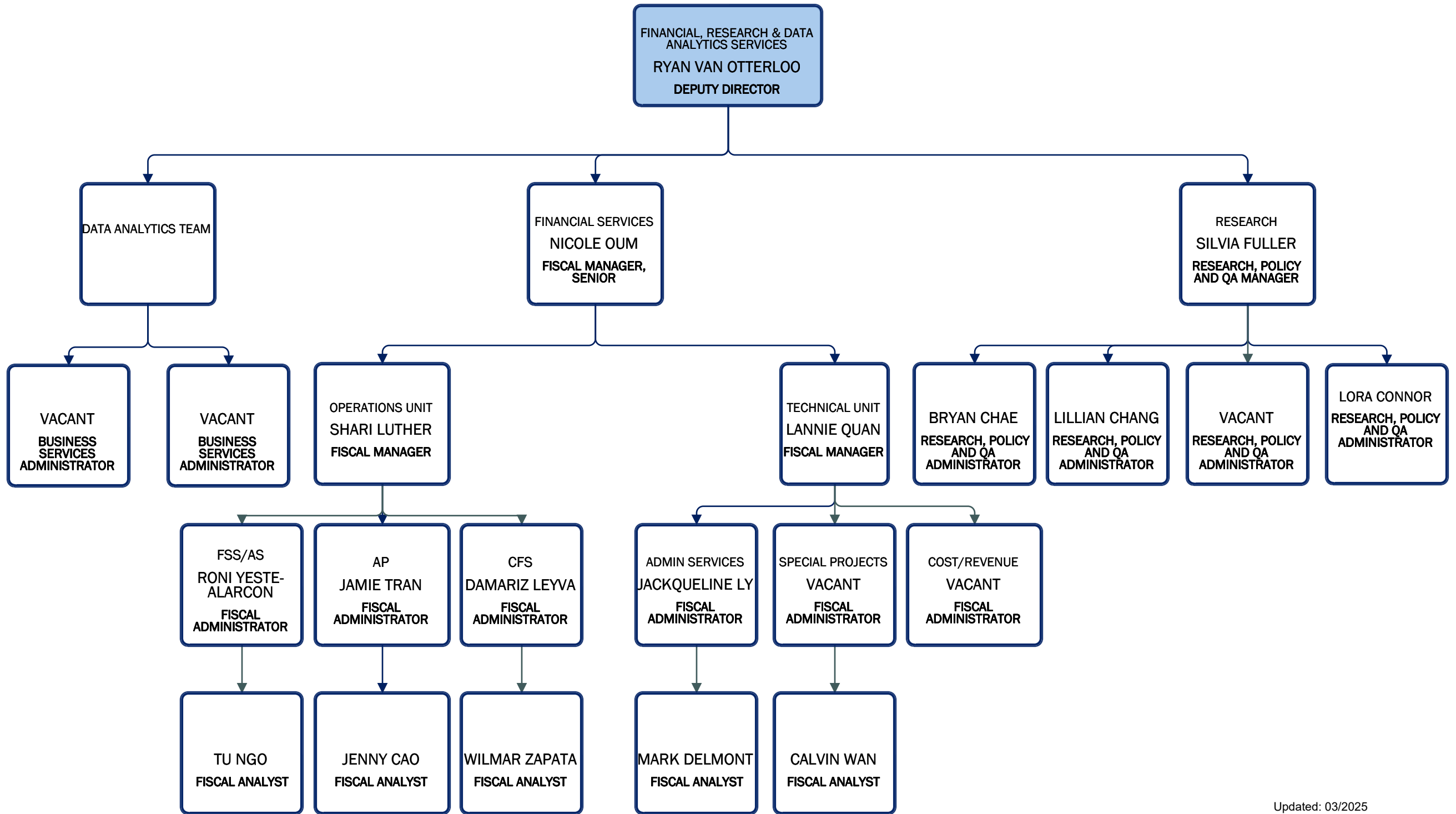
# Quality Support Team



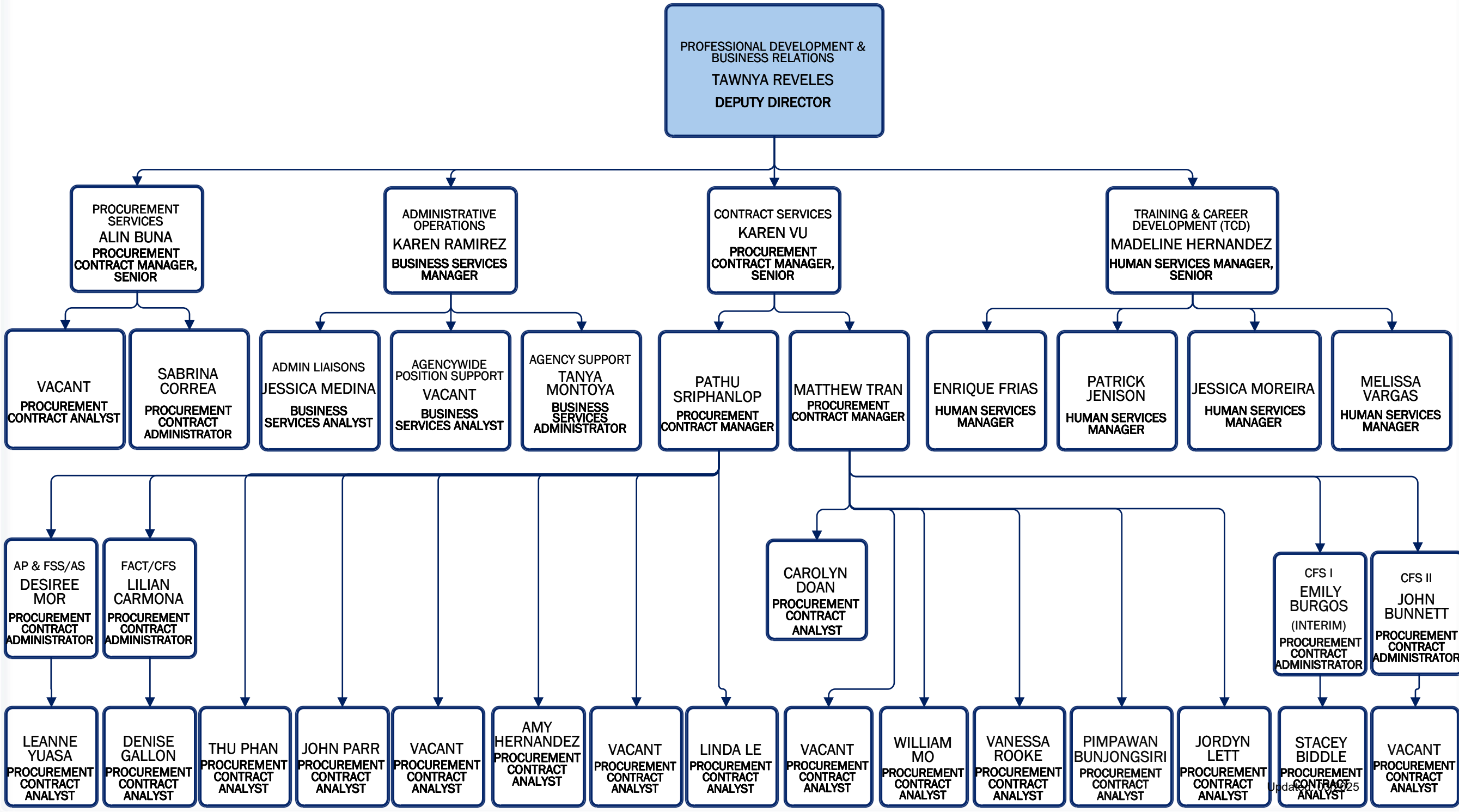
Administrative Services/Systems Management and Reporting Team (SMART)



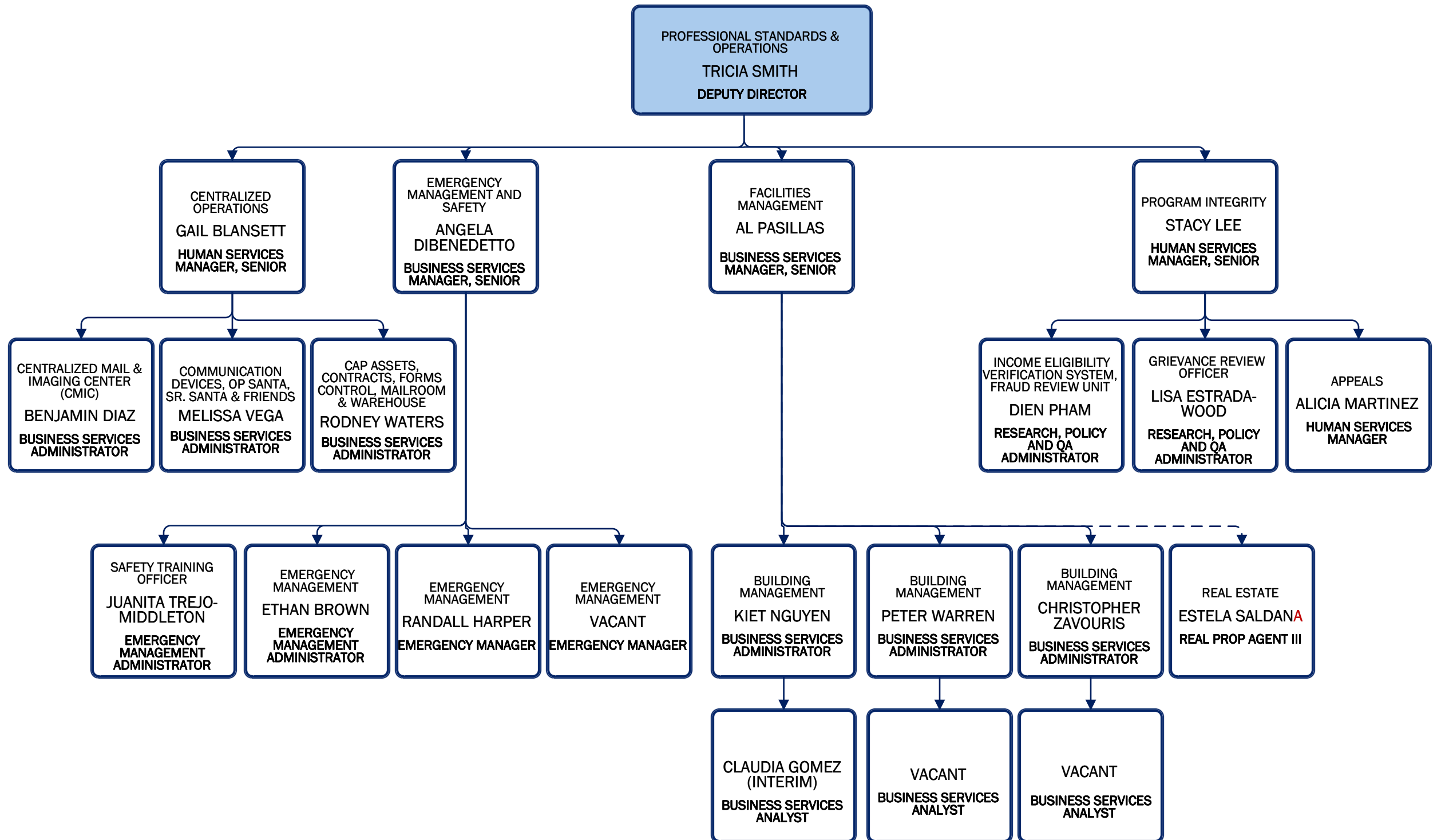
# Administrative Services/Financial, Research & Data Analytics Services



# Administrative Services/Professional Development & Business Relations



# Administrative Services/Professional Standards & Operations





Administrative Services/Human Resources

HUMAN RESOURCES  
HILDA JUAREZ  
DEPUTY DIRECTOR

EMPLOYEE RELATIONS &  
RETURN TO WORK  
CARLOS FRANCO  
HUMAN RESOURCES  
MANAGER

RECRUITMENT & RECORDS  
MANAGER  
ALEX BOCICOR  
HUMAN RESOURCES  
MANAGER

EMPLOYEE RELATIONS  
TEAM & CLASS AND COMP  
BRIANNA CORDOVA  
HUMAN RESOURCES  
ADMINISTRATOR

EMPLOYEE RELATIONS  
TEAM  
ALINA COMAN  
HUMAN RESOURCES  
ADMINISTRATOR

EMPLOYEE RELATIONS  
TEAM  
JULIANA AMEZCUA  
HUMAN RESOURCES  
ADMINISTRATOR

RETURN TO WORK TEAM  
VANESSA SANCHEZ  
HUMAN RESOURCES  
ANALYST

RECRUITMENT TEAM - AP &  
FSS/AS  
MARIVEL CHANG  
HUMAN RESOURCES  
ANALYST

RECRUITMENT TEAM - CFS  
& ADMIN  
CARISSA SEVILLA  
HUMAN RESOURCES  
ANALYST

JOB OFFER AND REFERRAL  
TEAM  
DORI EDLES (INTERIM)  
HUMAN RESOURCES  
ANALYST

EMPLOYEE RELATIONS  
TEAM  
ANDREA RAMIREZ  
HUMAN RESOURCES  
ADMINISTRATOR

EMPLOYEE RELATIONS  
TEAM  
TASSIANA MERVILUS  
HUMAN RESOURCES  
ADMINISTRATOR

EMPLOYEE RELATIONS  
TEAM  
KARLA TORRES  
HUMAN RESOURCES  
ADMINISTRATOR

EMPLOYEE RELATIONS  
TEAM  
CLAIRE SUGGS  
HUMAN RESOURCES  
ADMINISTRATOR

# Administrative Services/OC Information Technology

OC INFORMATION TECHNOLOGY

BUSINESS RELATIONSHIP  
MANAGEMENT  
BRIAN CLARK  
BUSINESS RELATIONS MANAGER

APPLICATION SERVICES  
VIPUL BHAVSAR  
TECHNOLOGY SERVICES MANAGER,  
SENIOR

DATA CENTER SERVICES  
TODD BATES  
TECHNOLOGY SERVICES MANAGER,  
SENIOR

DATA CENTER SERVICES  
SIMMI SINGH  
TECHNOLOGY SERVICES MANAGER

Administrative Services/Accounting

ACCOUNTING  
TIFFANY THIBEAULT  
DEPUTY DIRECTOR

REIMBURSEMENT CLAIMS  
SAMANTHA YUNG  
FISCAL MANAGER

UYEN PHAN  
FISCAL MANAGER, SENIOR

CEC CLAIMS  
ANIKA DANH  
FISCAL ADMINISTRATOR

ASST. CLAIMS  
LORELITA JULIANO  
FISCAL ADMINISTRATOR

CEC & ASST. CLAIMS/SPECIAL  
PROJECTS  
ALYSSA ROBERTSON  
FISCAL ANALYST

BENEFITS CONTROL & DISTRICTS  
SERVICES  
ALBERT PHAN  
FISCAL ADMINISTRATOR

PAYROLL AND GA  
ARIEL MAW  
FISCAL ADMINISTRATOR

COLLECTIONS AND AR  
LORENA POPOCA  
FISCAL ADMINISTRATOR

Assistance Programs/Operations/Initiatives/Budget

BUDGET/DIVISIONAL INITIATIVES/  
TECHNOLOGY  
KIM REED  
DEPUTY DIRECTOR

BUSINESS INITIATIVES/DIVISIONAL  
REPORTS/TECHNOLOGY  
GEORGE RUVALCABA  
HUMAN SERVICES MANAGER,  
SENIOR

STAFFING/HIRING/TRAINING/  
BUDGET/STRATEGIC PLAN  
MARIO BUSTOS  
HUMAN SERVICES MANAGER,  
SENIOR

CESAR VEGA  
HUMAN SERVICES MANAGER

ESMERALDA ORTUNO  
HUMAN SERVICES MANAGER

MONTE NOBLE  
HUMAN SERVICES MANAGER

PERLA CABRERA  
HUMAN SERVICES MANAGER

Assistance Programs/Regions - Specialized

REGIONS - SPECIALIZED  
ODON SANCHEZ  
DEPUTY DIRECTOR

ANAHEIM REGIONAL  
CENTER (ARC)  
BEATRIZ VELASQUEZ  
HUMAN SERVICES  
MANAGER, SENIOR

OUTSTATION/CCSC/  
SPECIALIZED UNITS  
ALICIA OJEDA  
HUMAN SERVICES  
MANAGER, SENIOR

ORANGE'S CALL &  
PROCESSING CENTER  
(OCPC) / DET HUB  
JOSEPH CARMONA  
HUMAN SERVICES  
MANAGER, SENIOR

SONYA LOPEZ  
HUMAN SERVICES  
MANAGER

CRISTINA  
ESPINOZA  
HUMAN SERVICES  
MANAGER

MAURO MEDINA  
HUMAN SERVICES  
MANAGER

ROXANNE  
BARCELOS  
HUMAN SERVICES  
MANAGER

MIGUEL ANGUIANO  
HUMAN SERVICES  
MANAGER

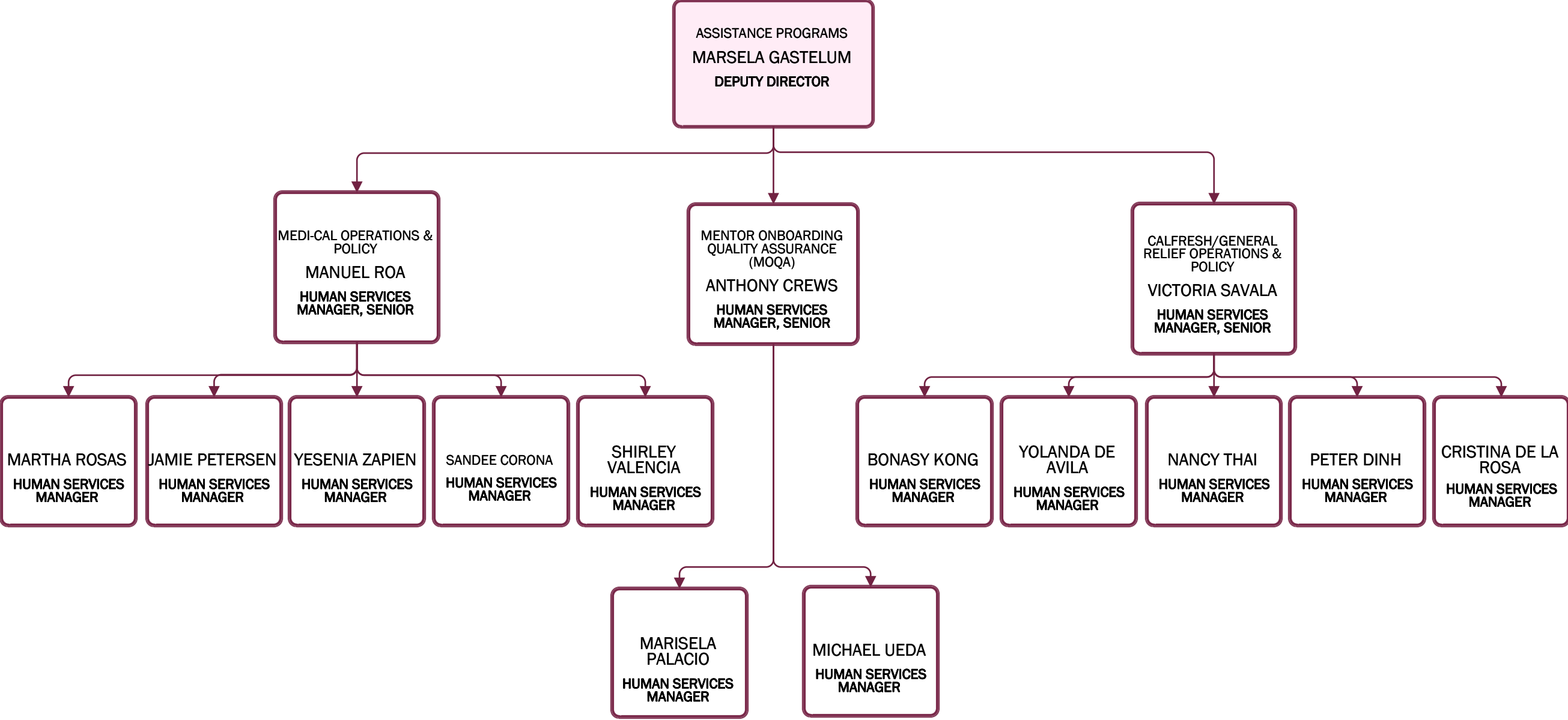
ALEX GARCIA  
HUMAN SERVICES  
MANAGER

FEDERICO  
VINDIGNI  
HUMAN SERVICES  
MANAGER

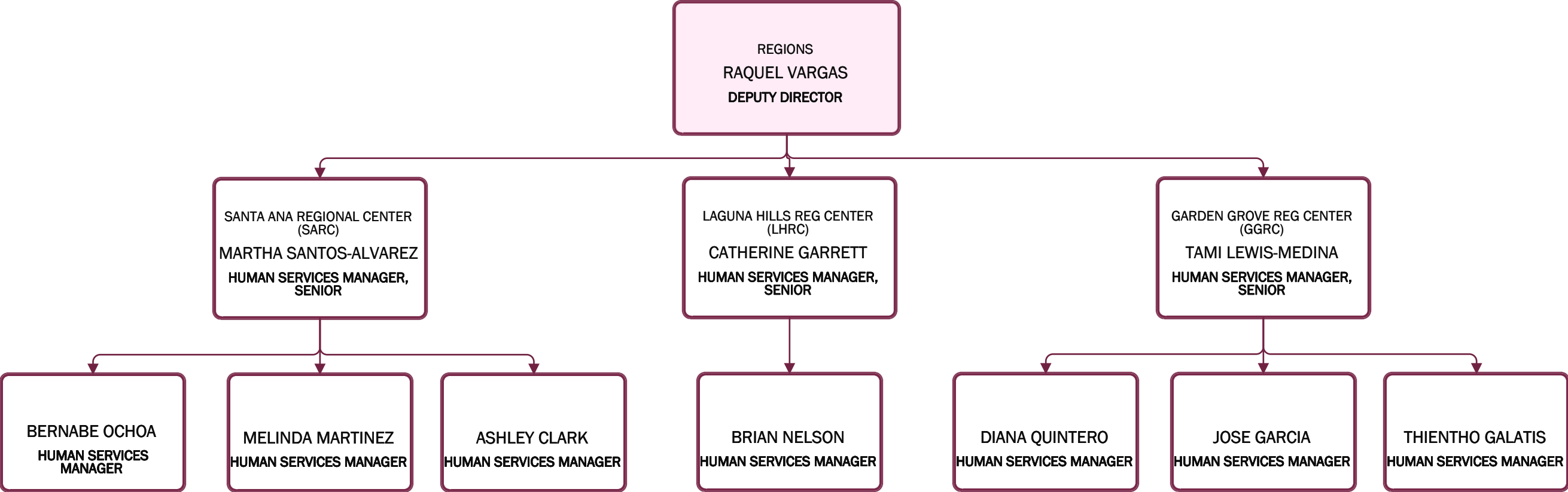
KENNY  
RODRIGUEZ  
HUMAN SERVICES  
MANAGER)

NICOLE COLE  
HUMAN SERVICES  
MANAGER

# Assistance Programs



Assistance Programs/Regions



Assistance Programs/Projects Lead

PROJECTS LEAD  
DANA ARDELEANU  
HUMAN SERVICES MANAGER  
SENIOR



LUPE GONZALEZ  
HUMAN SERVICES MANAGER



Children & Family Services/Planning & Permanency Services

PLANNING & PERMANENCY SERVICES  
ILAN WOLF  
DEPUTY DIRECTOR

TRANSITIONAL PLANNING SERVICES  
DEBORAH MATHY  
HUMAN SERVICES MANAGER, SENIOR

OPERATIONAL SUPPORT SERVICES  
KEITH RUPPEL  
BUSINESS SERVICES ADMINISTRATOR

CHILD AND FAMILY TEAM  
GREG MANNING  
HUMAN SERVICES MANAGER

STRATEGIC PLANNING & PROJECT COORDINATION/PERSONNEL COORDINATION  
MARTIN RAYA  
HUMAN SERVICES MANAGER, SENIOR

POLICY DEVELOPMENT UNIT  
CARMEN MCCORVEY  
HUMAN SERVICES MANAGER

MULTI-AGENCY FAMILY PARTNERSHIP  
VERONICA ZUNIGA  
HUMAN SERVICES MANAGER, SENIOR

TUSTIN FAMILY CAMPUS/FACT/RESOURCE DEV & MGMT  
RITA RANGEL  
HUMAN SERVICES MANAGER, SENIOR

QUALITY ASSURANCE  
MARK BOYCE  
HUMAN SERVICES MANAGER

QUALITY ASSURANCE  
MARIA MARTIN  
HUMAN SERVICES MANAGER

VACANT  
HUMAN SERVICES MANAGER

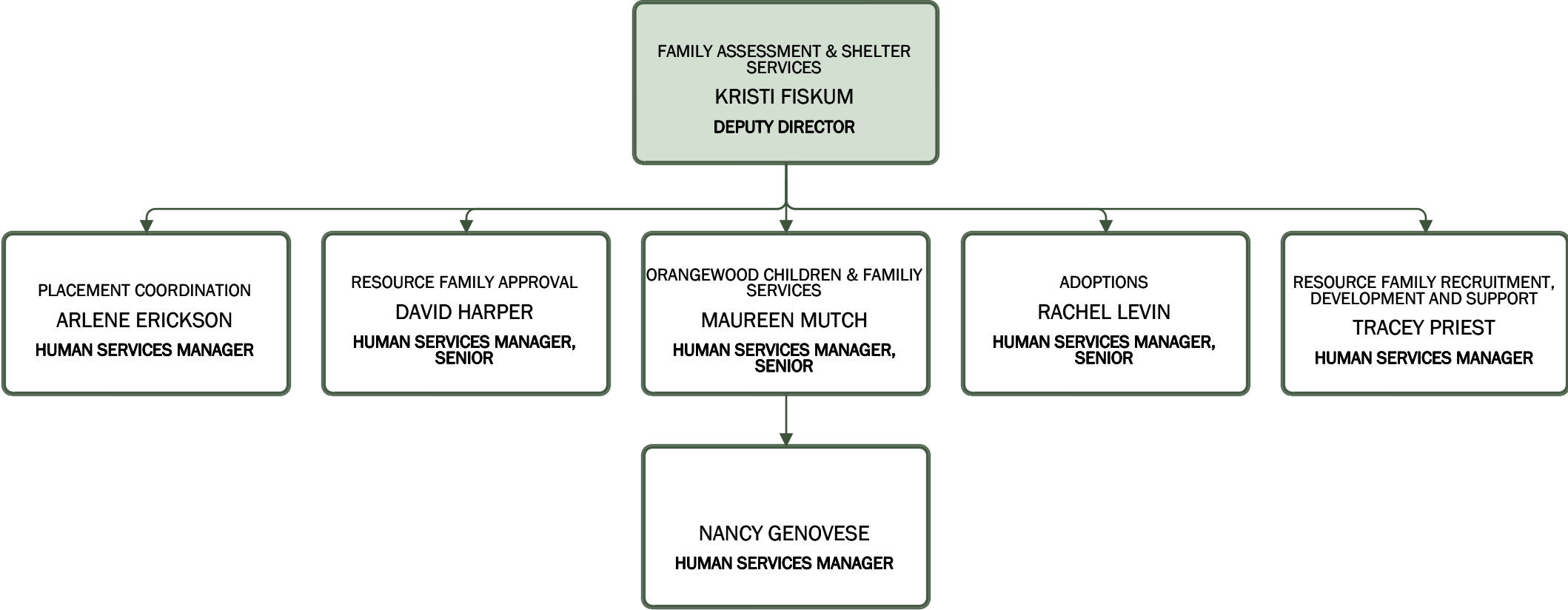
DEBBIE NITA  
HUMAN SERVICES MANAGER

LETICIA GALVEZ  
BUSINESS SERVICES ADMINISTRATOR

FAMILIES AND COMMUNITIES TOGETHER (FACT)  
CLAUDIA JUAREZ  
HUMAN SERVICES MANAGER

QUALITY ASSURANCE  
VACANT  
HUMAN SERVICES ADMINISTRATOR

**Children & Family Services/Family Assessment & Shelter Services**



Children & Family Services/Continuing Family Services

CONTINUING FAMILY SERVICES  
SCOTT BURDICK  
DEPUTY DIRECTOR

VISITATION & SUPPORTIVE SERVICES  
KHAC QUY NGUYEN  
HUMAN SERVICES MANAGER

SPECIAL MEDICAL  
VACANT  
HUMAN SERVICES MANAGER,  
SENIOR

SPECIAL MEDICAL  
COLLEEN HONCH  
HUMAN SERVICES MANAGER,  
SENIOR

PERMANENCY SERVICES &  
COLLABORTIVE COURT  
PROGRAMS  
KRISTEN HUNTER  
HUMAN SERVICES MANAGER,  
SENIOR

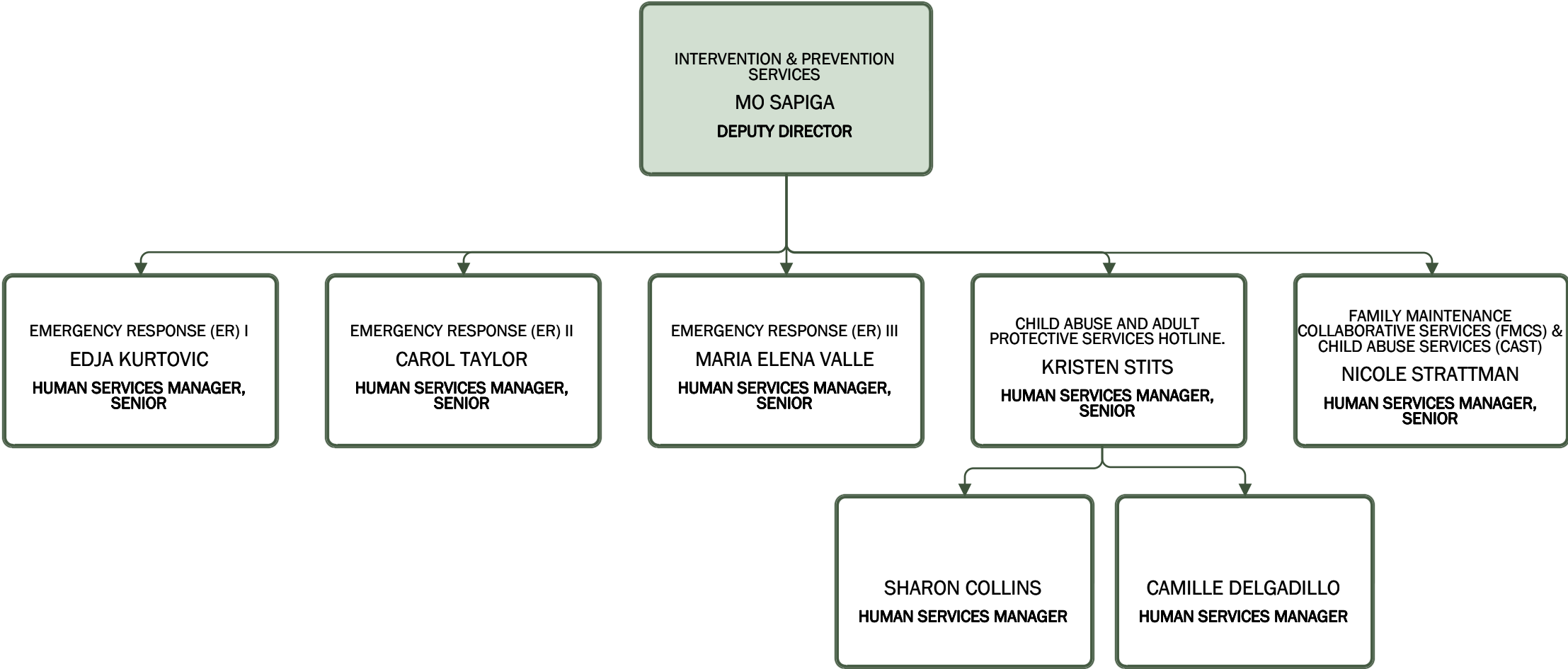
DONNY SIMPSON  
HUMAN SERVICES MANAGER

SFS CONTINUING & COURT  
OFFICERS  
CHRISTOPHER AVVENTINO  
HUMAN SERVICES MANAGER,  
SENIOR

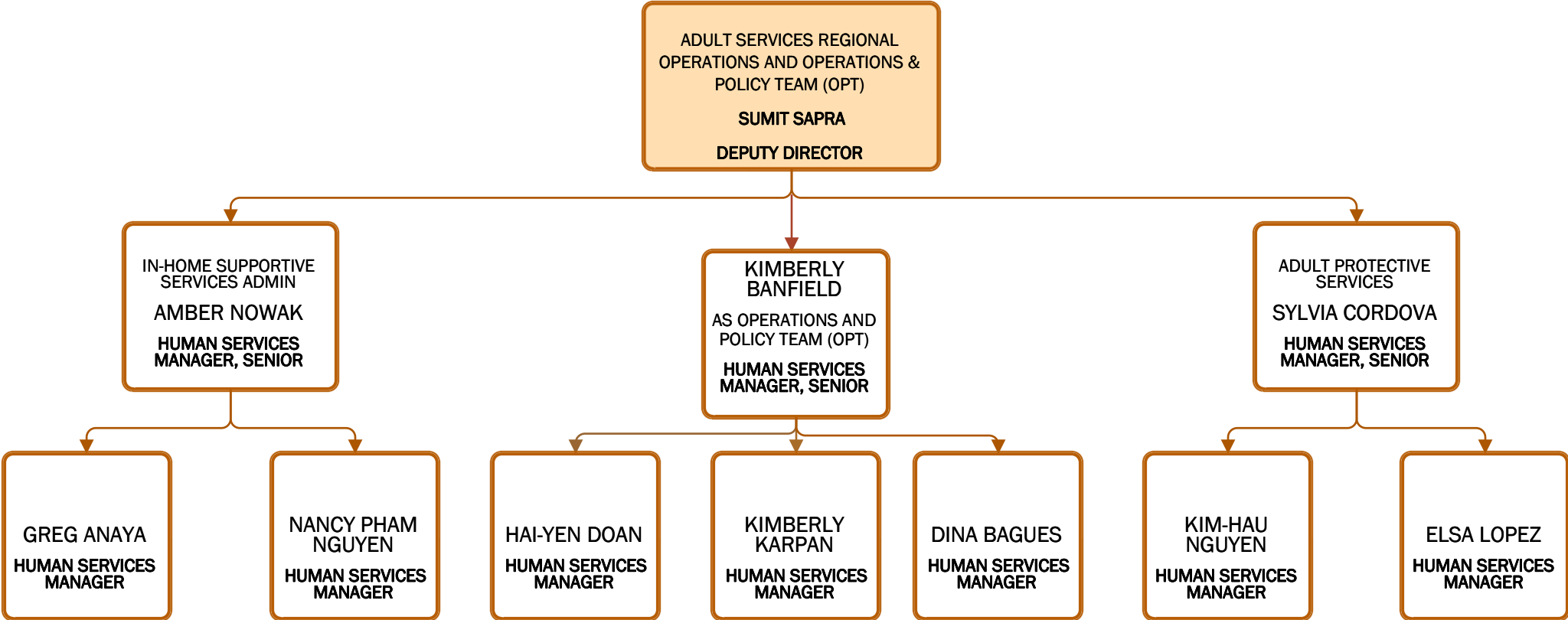
COURT SERVICES  
VACANT  
HUMAN SERVICES MANAGER,  
SENIOR

INTEGRATED CONTINUING  
SERVICES  
JILL BRIGHT  
HUMAN SERVICES MANAGER,  
SENIOR

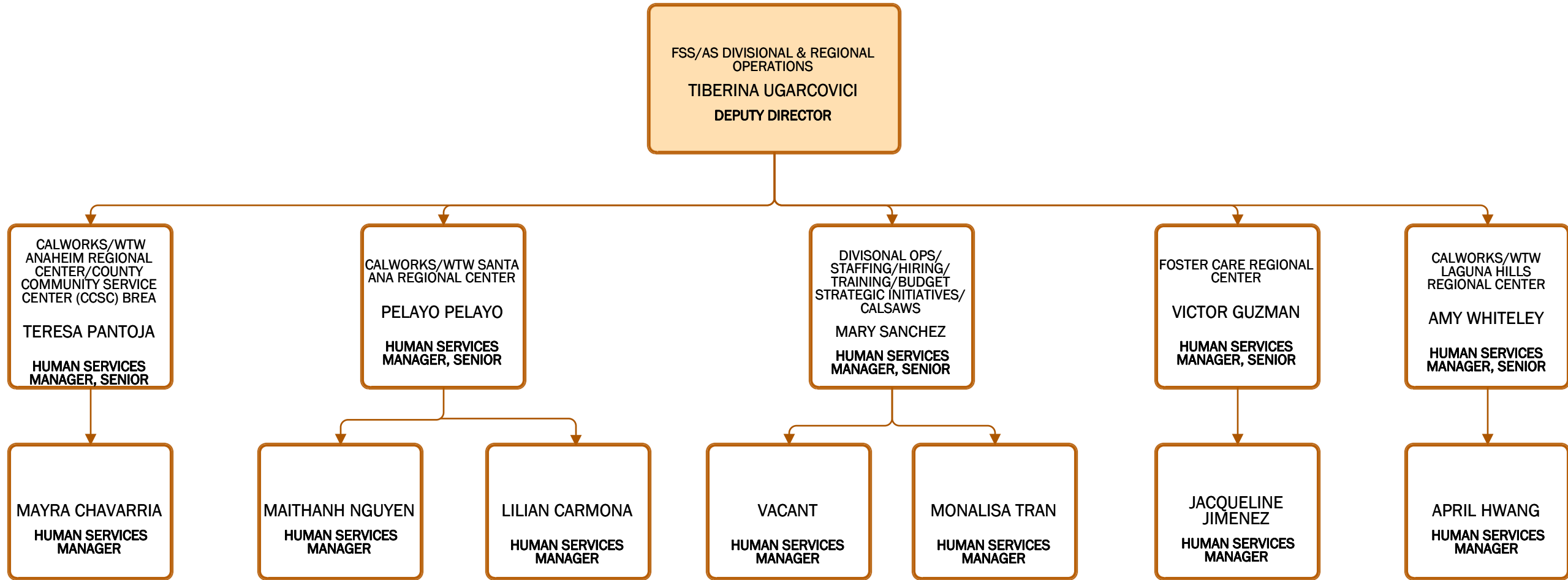
# Children & Family Services/Intervention & Prevention Services



**Family Self-Sufficiency and Adult Services/Adult Services**



# Family Self-Sufficiency and Adult Services/Divisional & Regional Operations



Family Self-Sufficiency and Adult Services/Operations & Policy Team (OPT)

FSS/AS OPERATIONS AND POLICY  
TEAM (FSS-AS OPT).  
LOAN ENGLISH  
DEPUTY DIRECTOR

JAY WONG  
HUMAN SERVICES  
MANAGER, SENIOR

ADAM TIPPS  
HUMAN SERVICES  
MANAGER, SENIOR

POLLY DAGMY-  
GOFF  
HUMAN SERVICES  
MANAGER, SENIOR

ROSA PALACIOS  
HUMAN SERVICES  
MANAGER

NICOLE MASTIN  
HUMAN SERVICES  
MANAGER

PETER CHEN  
HUMAN SERVICES  
MANAGER

JACQ GARZA  
HUMAN SERVICES  
MANAGER

ROSIO ALONSO  
HUMAN SERVICES  
MANAGER

THOMAS HARRIS  
HUMAN SERVICES  
MANAGER

MISAEEL  
HERNANDEZ  
HUMAN SERVICES  
MANAGER

MALISA SAN  
HUMAN SERVICES  
MANAGER

MARIA MANZO  
HUMAN SERVICES  
MANAGER